



Spencer Munson
128 High Road
Loughton IG10 4BE

Tel: 020 8502 2222

loughton@spencermunson.co.uk
Website: spencermunson.co.uk



Maple Gate, Loughton, IG10

**** ONE BEDROOM MAISONETTE** ** GROUND FLOOR** ** MODERN THROUGHOUT** **
DOUBLE BEDROOM** ** SEPARATE KITCHEN TO LOUNGE** ** COMMUNAL GADENS** ** LOCAL
TO SHOPS AND AMENITIES** AVAILABLE NOW ON A UNFURNISHED BASIS** **12 MONTHS
MINIMUM TENANCY** ** EPC RATING C COUNCIL TAX BAND C****

Rent: £1,495 - Monthly



Maple Gate, Loughton, IG10

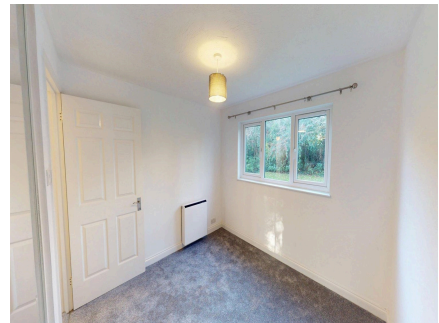
Reception 1



Kitchen



Bedroom 1



Bathroom

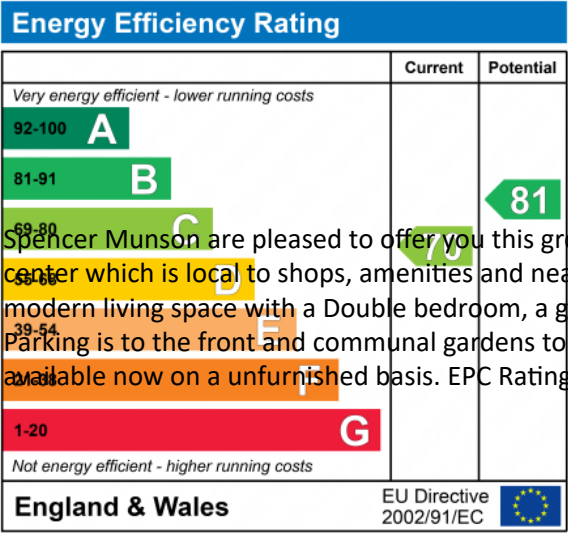


Communal garden Garden

Parking

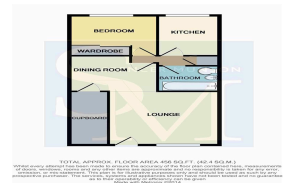
Central Heating

Double Glazing



Spencer Munson are pleased to offer you this ground floor maisonette situated to the Northern end of the town center which is local to shops, amenities and nearby a central Line train station. This property offers you a modern living space with a Double bedroom, a good sized Lounge, separate kitchen and Modern Bathroom. Parking is to the front and communal gardens to the rear. Neutrally Decorated throughout, this property is available now on a unfurnished basis. EPC Rating C Council Tax band C

Maple Gate, Loughton, IG10



Disclaimer

These particulars are intended to give a fair and substantially correct overall description for the guidance of intending tenants/purchasers and do not constitute an offer or part of a contract. Prospective tenants/purchasers and/or lessees should seek their own professional advice. All descriptions, dimensions, reference to condition, fixtures, fittings and necessary permissions for use and occupation and other details are given in good faith and are believed to be correct. However, intending tenants/purchasers should not rely on them as statements or representations of fact, but must satisfy themselves by inspection or otherwise as to the correctness of each of them. Fixtures and fittings shown in pictures and on viewings may well not be included in any tenancy/sale and any prospective tenant/purchaser must clarify this for themselves. All measurements and floorplans are approximate and produced as a guide in good faith. Please note that some of the furniture and decor items shown in these images have been digitally added using AI technology for illustrative purposes. The actual property may differ in appearance. Prospective buyers or renters are encouraged to visit the property in person to get an accurate representation.