

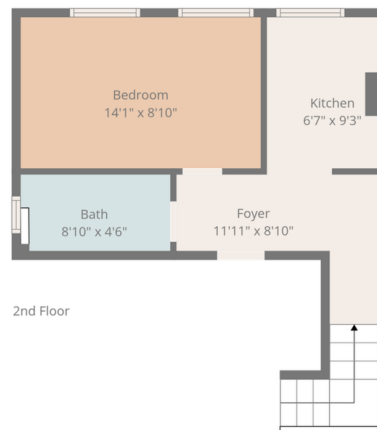
**Flat 2, 121, Evering Road, Stoke Newington**

Guide Price £460,000

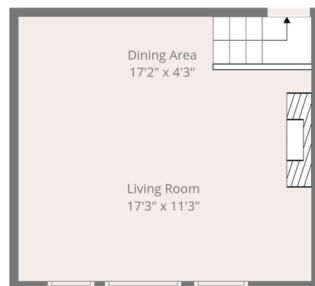
1 bed 1 bath 1 sofa



- Quote RA1223 for all enquiries
- Communal garden
- High ceilings
- Original sash windows
- Set on a quiet period street
- large 1 bedroom apartment arranged over two floors (597 sqft)
- Incredible period features
- Separate living and dining areas
- Solid wooden floor throughout
- Close proximity to Rectory Road on the Overland, Stoke Newington and Clapton Stations



2nd Floor



1st Floor

**TOTAL: 597 sq. ft**  
1st floor: 269 sq. ft, 2nd floor: 328 sq. ft  
EXCLUDED AREAS: WALLS: 79 sq. ft  
Disclaimer: Measurements Deemed Highly Reliable But Not Guaranteed



Quote RA1223 for all enquiries