



Mill Farm Avenue, TW16

£435,000

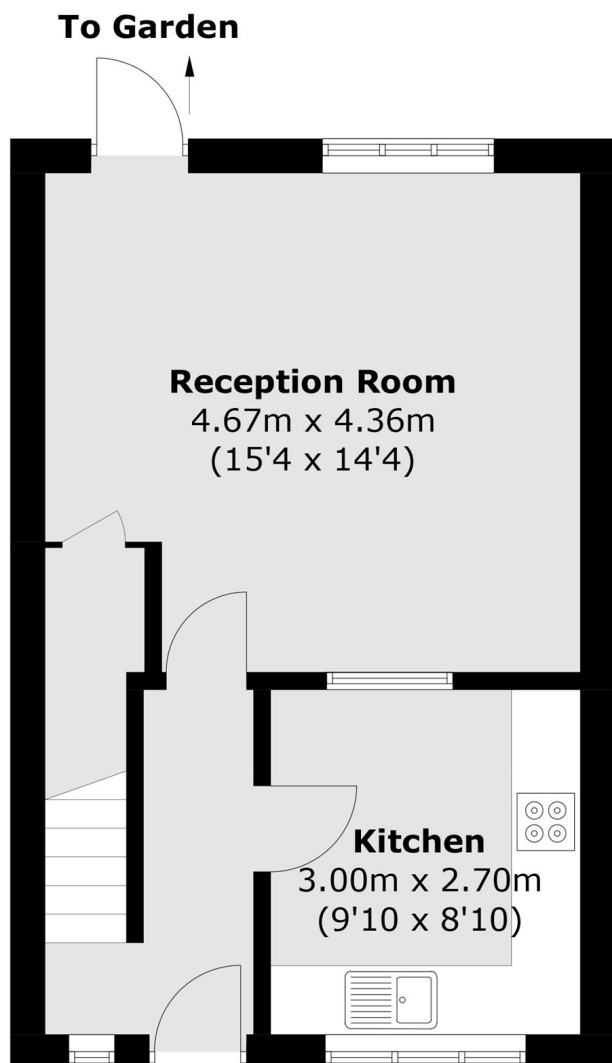
A well presented three-bedroom mid-terrace family home, perfect for first time buyers. Boasting a private garden ideal for relaxing and entertaining, this charming property offers flexible living accommodation.

Mill Farm Avenue is a quiet road within half a mile of both Upper Halliford and Sunbury stations, which provide a direct service into London Waterloo. Local shops are also close by.

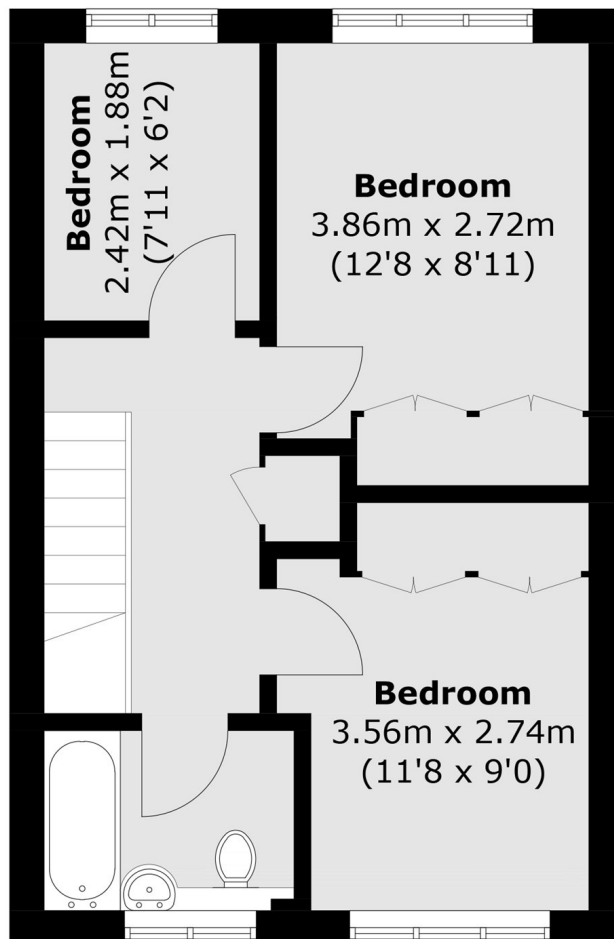
Features

- Great Starter Home
- Freehold
- Mid-Terrace
- 3 Bedrooms
- Private Garden
- Garage

Mill Farm Avenue, Sunbury-On-Thames, TW16



Ground Floor



First Floor

Total area (approx.): 71.3 sq. m (767.4 sq. ft)