

32 Village Centre, £92,500*

**RICHMOND
VILLAGES**

Part of Bupa

Shared Ownership Available, (Other charges apply)

SF

1



1



EPC - C



1 bedroom second floor apartment

A spacious second-floor one-bedroom apartment at 493 sqft. The apartment is situated close to the main village centre and village facilities.

Specification

- Lounge/diner with large, double-glazed window with south-facing rear aspect, over the lawn gardens. Modern remote controlled electric fire and surround. Double glazed doors leading to the kitchenette.
- Modern kitchenette with a range of base and wall units with under cupboard lighting. Stainless steel single bowl sink unit with mixer taps. Integrated under counter fridge. Spotlights to the ceiling.
- Double bedroom with large, double-glazed window to the front aspect. Double doors leading to the en-suite.
- En-suite shower room with large shower area with a glazed screen. White suite comprising of a low-level WC, and wash hand basin set within a fitted vanity unit, fitted wall mounted cabinet with mirror, floor to ceiling tiles to the shower area, heated chrome electric towel rail and shaver point.
- Entrance hall with double door storage cupboard and doors leading off to the living room and the bedroom.
- TV and satellite points*.
- Well stocked flower borders and lawns maintained by the Village Gardeners.
- Allocated parking space for one resident car owner .

*Satellite subscription not included.

Important Notice: These particulars are intended to give a fair and substantially correct overall description. Other fees and charges apply, please contact the Village Advisers for further details. Properties are sold on a 125 year lease and this property has 125 years remaining. Generic imagery is used and is not representative of the property for sale.

01332 794300

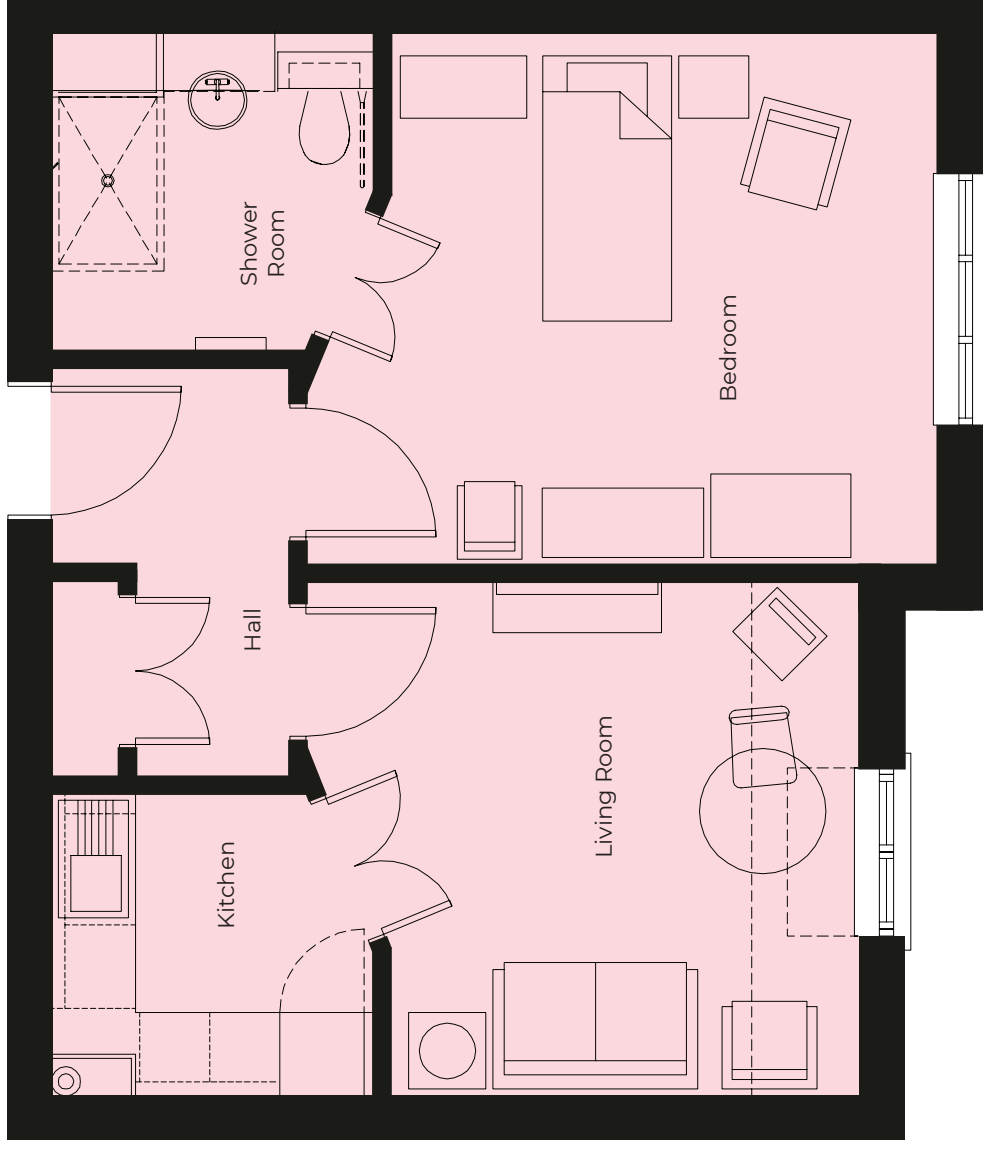
astonontrent@richmond-villages.com

Richmond Villages Aston-on-Trent,
Richmond Drive, Aston-on-Trent, Derbyshire DE72 2EA

32 Village Centre

Second Floor | 45.83m² – 493ft²

- Kitchen**
2300mm x 2180mm
7'7" x 7'2"
- Living Room**
3935mm x 3710mm
12'11" x 12'2"
- Bedroom**
4498mm x 3815mm
14'9" x 12'6"
- En-suite Shower Room**
2300mm x 2285mm
7'7" x 7'6"



These particulars are intended to give a fair and substantially correct overall description. Measurements have been taken at 1500mm skelling height. All dimensions are approximate. Bedroom measurements include the wardrobe if applicable. Room measurements include bay windows if applicable. Furniture layout is to give an indicative impression. Although all efforts have been made to ensure its accuracy at time of print dimensions, fixtures, fittings, finishes and specifications are subject to change without notice. The properties are sold unfurnished.

