



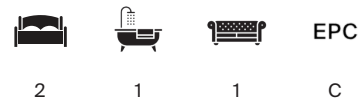
LEXHAM GARDENS

Kensington W8



AN IMPRESSIVE TWO BEDROOM APARTMENT

Located on the highly desirable Lexham Gardens, this second floor apartment offers a rare renovation opportunity.



Local Authority: Royal Borough of Kensington and Chelsea
Council Tax band: G

Tenure: Share of freehold, approximately 973 years remaining

Ground rent: Peppercorn

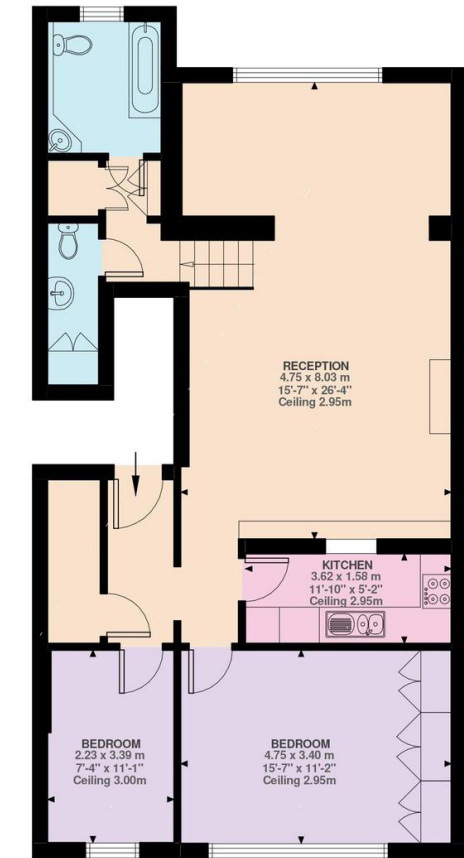
Service charge: £4,776.80 per annum, reviewed every year, next review due 2026

Guide Price: £1,350,000

Spanning approximately 1,000 sq ft, the property combines classic Kensington proportions with incredible natural light. The living area is designed for entertaining, boasting a dedicated dining area and separate kitchen. The apartment features high ceilings and views over one of the most beautiful private garden squares in W8. A generous principal bedroom with built-in storage and an additional spacious second bedroom makes for versatility. The property further benefits from a large family bathroom and separate WC.

Lexham Gardens is located just south of Kensington High Street which has an extensive array of shopping and eateries as well as excellent transport links. The open spaces of Kensington Gardens and Holland Park are both a short distance away.

Lexham Gardens, W8
Approximate Gross Internal Area
90.76 SQ.M / 977 SQ.FT



Second Floor
977 ft²

Illustration for identification purposes only. Not to scale.
Floor Plan Drawn According To RICS Guidelines.

Approximate Gross Internal Area = 90.76 sq m / 977 sq ft

This plan is for layout guidance only. Not drawn to scale unless stated. Windows and door openings are approximate. Whilst every care is taken in the preparation of this plan, please check all dimensions, shapes and compass bearings before making any decisions reliant upon them. (ID767206)

We would be delighted
to tell you more.

Jordanna Mancina
+44 20 3892 3573
jordanna.mancina@knightfrank.com

Knight Frank Kensington
52-56 Kensington Church Street
London W8 4DB

[knightfrank.co.uk](https://www.knightfrank.co.uk)

Your partners in property

1. Particulars: These particulars are not an offer or contract, nor part of one. You should not rely on statements given by KF West Midlands Ltd., in the particulars, by word of mouth or in writing ("information") as being factually accurate about the property, its condition or its value. Neither KF West Midlands Ltd, nor any joint agent has any authority to make any representations about the property, and accordingly any information given is entirely without responsibility on the part of KF West Midlands Ltd. 2. Material Information: Please note that the material information is provided to KF West Midlands Ltd, by third parties and is provided here as a guide only. While KF West Midlands Ltd, has taken steps to verify this information, we advise you to confirm the details of any such material information prior to any offer being submitted. If we are informed of changes to this information by the seller or another third party, we will use reasonable endeavours to update this as soon as practical. 3. Photos, Videos etc: The photographs, property videos and virtual viewings etc. show only certain parts of the property as they appeared at the time they were taken. Areas, measurements and distances given are approximate only. 4. Regulations etc: Any reference to alterations to, or use of, any part of the property does not mean that any necessary planning, building regulations or other consent has been obtained. A buyer must find out by inspection or in other ways that these matters have been properly dealt with and that all information is correct. 5. Fixtures and fittings: A list of the fitted carpets, curtains, light fittings and other items fixed to the property which are included in the sale (or may be available by separate negotiation) will be provided by the Seller's Solicitors. 6. VAT: The VAT position relating to the property may change without notice. 7. To find out how we process Personal Data, please refer to our Group Privacy Statement and other notices at <https://www.knightfrank.com/legals/privacy-statement>.

Particulars dated March 2026. Photographs and videos dated March 2026. All information is correct at the time of going to print. KF West Midlands Limited, a company registered in England and Wales with registered number 13144773. Our registered office is at 9 College Hill, Shrewsbury, Shropshire, SY1 1LZ. KF West Midlands Limited is an independently owned member of the Knight Frank Network operating under licence from Knight Frank LLP