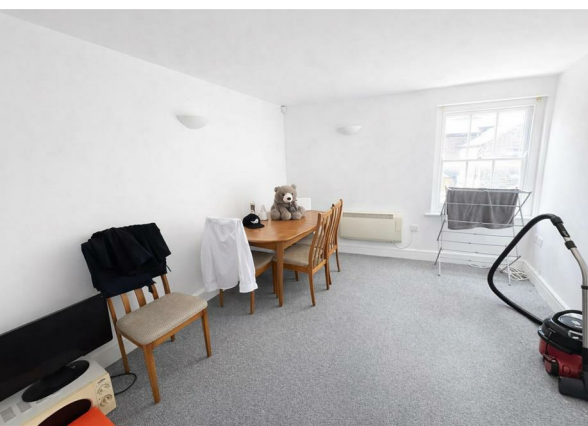


2 Wood Street, Dunstable, Bedfordshire, LU6 3FF  
£180,000

**ROBINSONS**



NO UPPER CHAIN | A TWO BEDROOM PROPERTY WITH QUIRKY DESIGN AND OFF ROAD PARKING, IDEALLY POSITIONED ON WOOD STREET IN DUNSTABLE, CLOSE TO THE TOWN CENTRE AND LOCAL AMENITIES.

Positioned on secluded Wood Street in Dunstable, Bedfordshire, LU6 3FF, this well presented home offers an excellent opportunity for first time buyers or investors. The property features a modern kitchen, a bright living area and a contemporary shower room, all finished in a practical and appealing style. The home also benefits from double glazing throughout and a well balanced layout that maximises the available space.

The property provides two bedrooms with the added advantage of an en suite to the master bedroom, creating a comfortable and functional living arrangement. It also represents a strong rental investment opportunity with an estimated income of around £1,000pcm, making it attractive for landlords as well as owner occupiers.

The location is a key feature, being within easy reach of Dunstable town centre which offers a wide range of shops, restaurants and everyday amenities. Well regarded local schools include Queensbury Academy, Manshead CE Academy, Icknield High School and Ashton St Peters Primary School, all easily accessible from the property. Transport links are excellent with convenient access to the A5 and M1 junction 11, along with regular bus services connecting to Luton and Milton Keynes, and rail services from Luton providing direct routes into London.



20 West Street  
Dunstable  
Bedfordshire  
LU6 1SX  
01582 661112  
sales@robinsons-estates.co.uk  
<https://www.robinsons-estates.co.uk>

