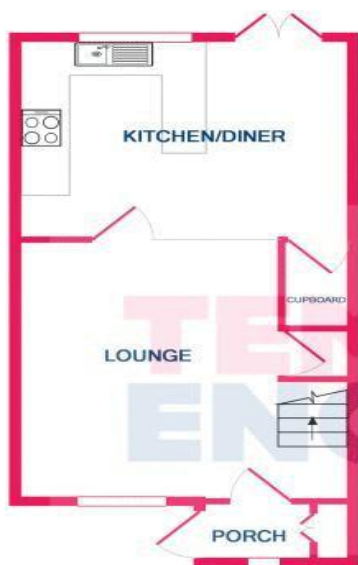
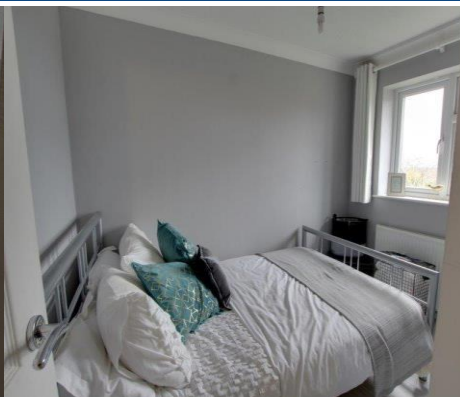
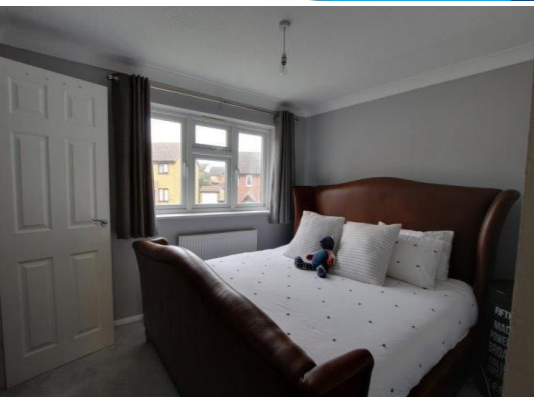


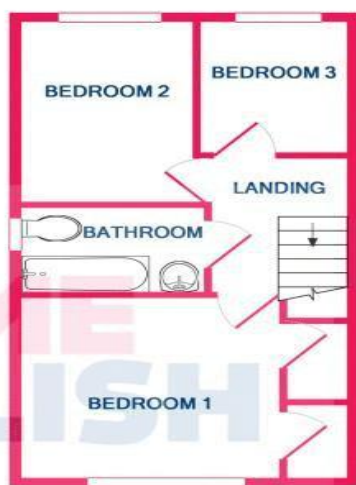


Offered TO LET is this immaculate three-bedroom semi-detached house. This home offers porch, lounge, modern kitchen-diner with appliances included, modern bathroom, good size rear garden, driveway for two cars. Walking distance of Wickford Town centre and Railway Station. AVAILABLE SOON!!

Price Monthly Rental Of £1,250



GROUND FLOOR



1ST FLOOR

Whilst every attempt has been made to ensure the accuracy of the floor plan contained here, measurements of doors, windows, rooms and any other items, are approximate and no responsibility is taken for any error, omission, or mis-statement. This plan is for illustrative purposes only and should be used as such by any prospective purchaser. The services, systems and appliances shown have not been tested and no guarantee as to their operability or efficiency can be given.
Made with Metropix ©2018

- **AVAILABLE SOON!!**
- **Entrance Porch**
- **Lounge (14' plus Stairs x 13')**
- **Kitchen Diner (14' x 9')**
- **Bedroom One (10'7 x 9' max Door Recess) Built in Wardrobe**
- **Bedroom Two (9'7 x 6'9)**
- **Bedroom Three (7' x 6'7)**
- **Modern Family Bathroom**
- **Driveway For Two Cars**
- **Double Glazing & Radiator heating**

