



2 BEDROOM TERRACED HOUSE WITH 2 PARKING SPACES

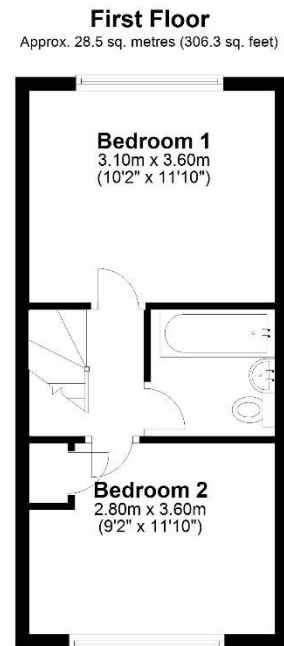
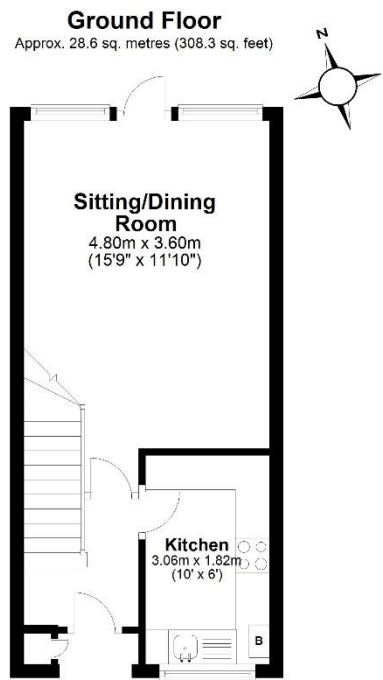
Wordsworth Mead, Redhill, Surrey, RH1 1AJ
GUIDE PRICE £370,000

2 bedroom terraced house with 2 allocated parking spaces located in a quiet cul-de-sac within walking distance of Redhill train station. Modern kitchen, open plan sitting/dining room with double doors onto the secluded garden and patio.

On the first floor you will find 2 double bedrooms and a modern bathroom with a white suite. Gas central heating, double glazed, council tax band D. EPC C. CHAIN FREE.



lewis
white



Total area: approx. 57.1 sq. metres (614.6 sq. feet)



Council tax D, EPC C.