

# SNELLERS

ESTATE AGENTS



**Poulett Gardens, TW1**

**£1,495,000**

A well presented four bedroom semi-detached family home measuring in excess of 2,000 sq ft, located in this highly desirable road in Strawberry Hill.



This delightful family home has been thoughtfully renovated and extended by the current owners, creating a beautiful living space ideally suited to contemporary family living. The open-plan kitchen, dining, and family area forms the true heart of the home, seamlessly extending out to the sunny rear garden. Over the next two floors there are four bedrooms and two family bathrooms.

Further benefits include a downstairs shower room, utility room, underfloor heating in the kitchen and off street parking for up to three cars.

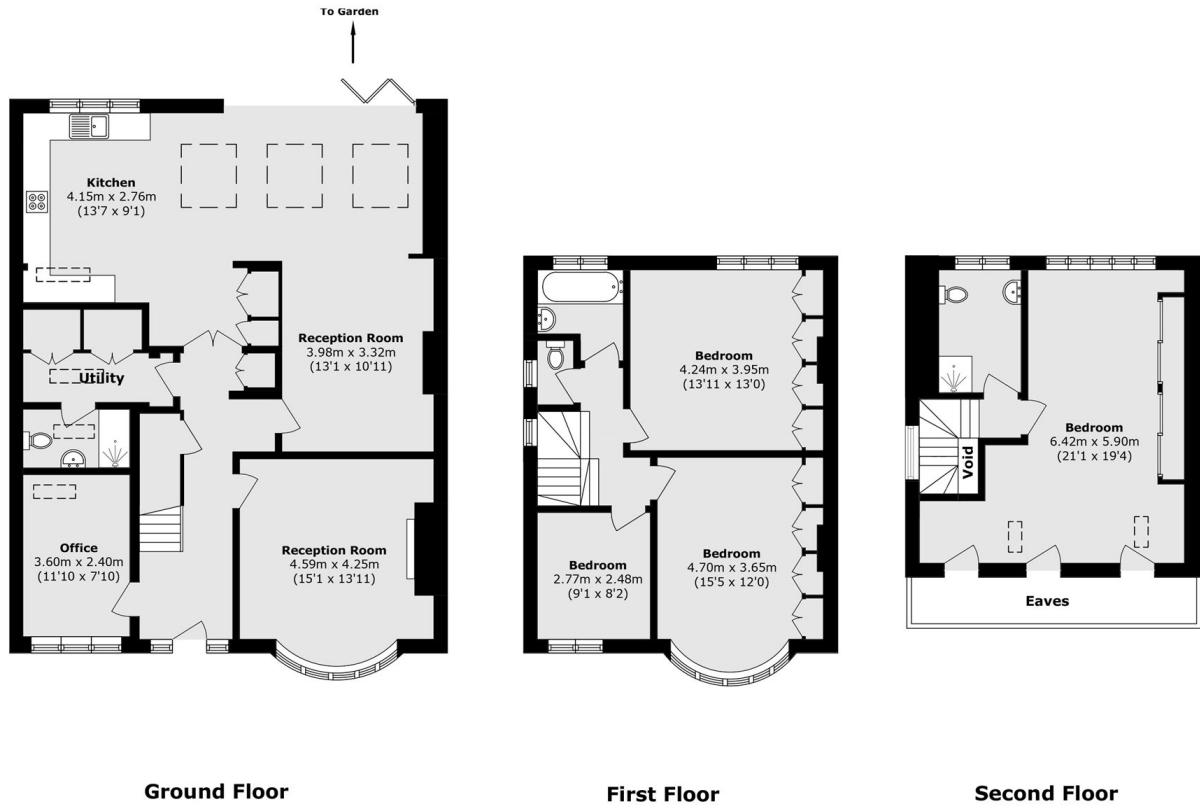
Poulett Gardens is one of Strawberry Hill's most sought after residential roads, close to Twickenham high street and station with direct links into Waterloo. There is also a number of popular schools nearby including St. Catherine's, Sir Richard Reynolds and Archdeacon.

- Well Presented • Four Bedrooms • Semi-Detached •
- Off-Street Parking • Close to Station • Good School Catchments •



# SNELLERS

ESTATE AGENTS



Total area (approx.): 193.8 sq. m (2086.0 sq. ft)  
(Excluding Void and Eaves)

Snellers Twickenham Sales  
64-66 Heath Road  
Twickenham  
TW1 4BX  
020 8892 5555  
twickenhamsales@snellers.co.uk

Energy Rating: C We aim to make our particulars both accurate and reliable. However they are not guaranteed; nor do they form part of an offer or contract. If you require clarification on any points then please contact us, especially if you're traveling some distance to view. Please note that appliances and heating systems have not been tested and therefore no warranties can be given as to their good working order