



Churton Place, SW1V

£1,650,000

Dexters



Churton Place, SW1V

A very bright two bedroom house tucked away in a quiet cul-de-sac. The property is in fantastic condition with two double bedrooms and large windows throughout.

As you enter the property on the ground floor, you are presented with a large living room which is filled with light and has high ceilings. The kitchen and dining space is on the lower ground floor.

On the first floor, there is a large principle bedroom which benefits from fitted wardrobes. The second bedroom is placed on the second floor with a recently refurbished family bathroom on the third.

There is lapsed planning for an extra room off the 1st floor planning ref: 13/01807/FULL.

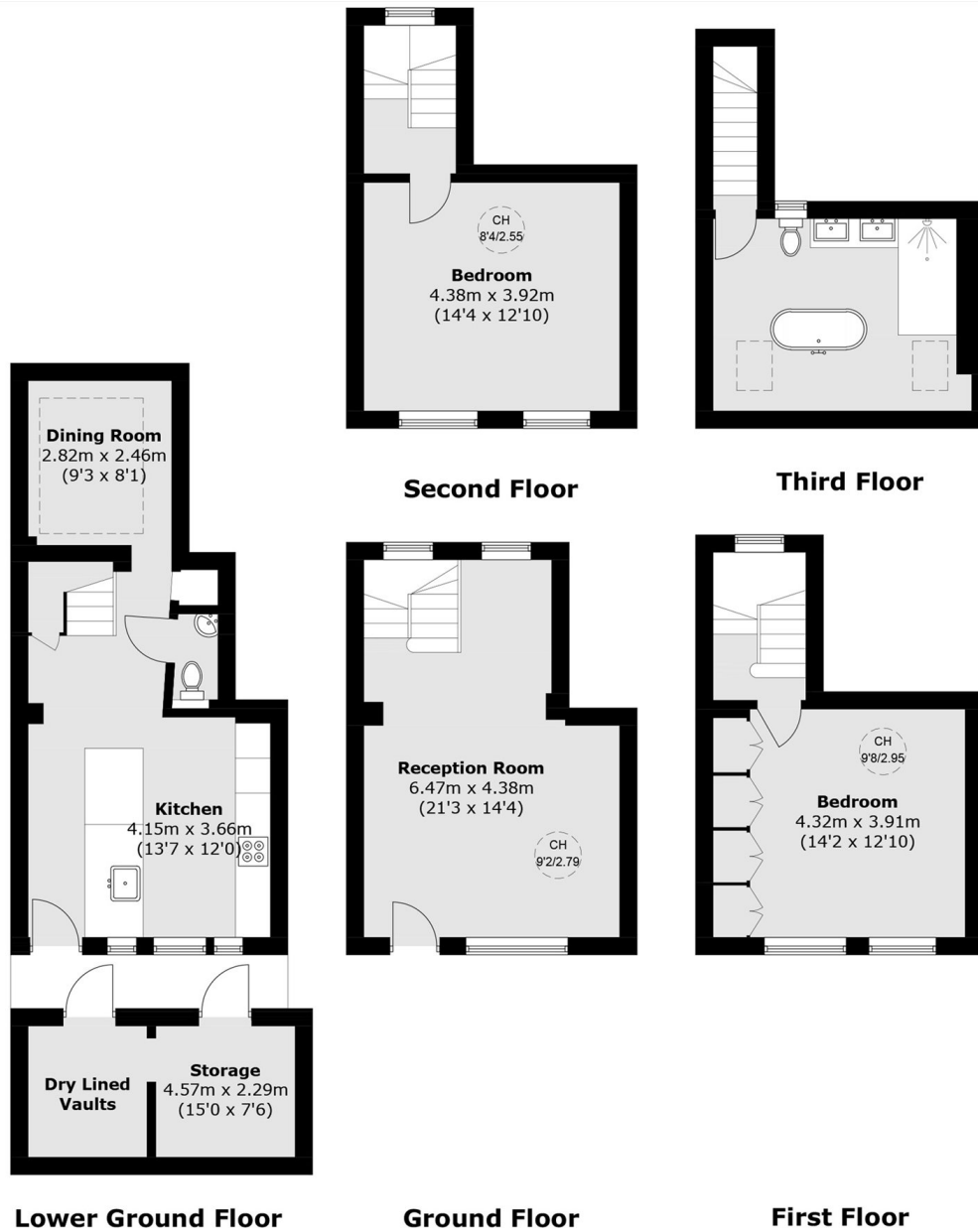
Churton Place is a short walk to Pimlico, Victoria, Sloane Square and Westminster transport links into Central London.

Features

- Freehold
- Fantastic Condition
- Cul-De-Sac
- Two Bedrooms
- Popular Location
- Large Entertaining Spaces



Churton Place, London, SW1V



Total area (approx.): 116.6 sq. m (1,255.0 sq. ft)
 Total area (approx.): 127.1 sq. m (1,368.0 sq. ft)
 (Including Dry Lined Vaults)