



Call: 02394 217317

Whatsapp: 0793 283 1587

Email: sarah@soldby.uk

Social media: @soldbySarahOliver

Website: www.soldby.uk



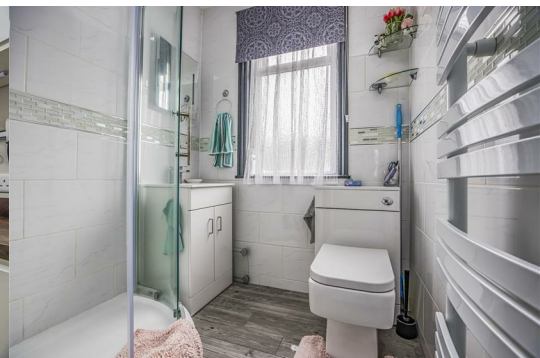
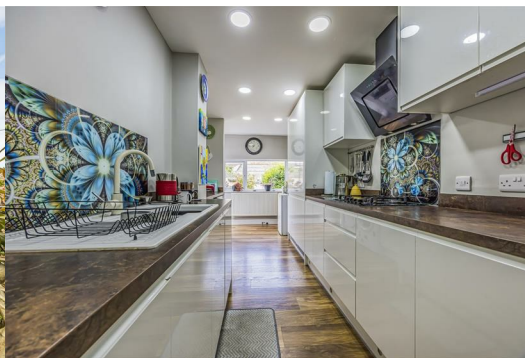
83 Chesterfield Road

Baffins, Portsmouth, PO3 6LY

Offers in the region of £299,995



*****THREE BEDROOM SEMI DETACHED HOUSE***WELL PRESENTED THROUGHOUT***WEST FACING GARDEN***PERFECT FIRST TIME PURCHASE OR FAMILY HOME***MODERN UPSTAIRS SHOWER ROOM & DOWNSTAIRS WC*****



Situated in the ever-popular Baffins area, this well-presented three-bedroom semi-detached home on Chesterfield Road offers spacious and versatile accommodation, ideal for families and professionals alike. Located within the sought-after Admiral Lord Nelson School catchment and just a short stroll from Baffins Pond and local shops, the property perfectly combines convenience with a welcoming neighbourhood setting.

The accommodation begins with an entrance porch leading into a bright and welcoming hallway, complete with useful understairs storage and a downstairs WC. To the front of the property is a cosy bay-fronted lounge, while to the rear a generous dining/family room provides an excellent space for entertaining and everyday living.

The modern white gloss kitchen has been thoughtfully designed with ample storage, integrated appliances and direct access to the rear garden, creating a practical and stylish hub of the home.

Upstairs, the first floor comprises three bedrooms, including two well-proportioned doubles and a third bedroom ideal as a nursery, dressing room or home office. The contemporary family bathroom has been modernised and features a shower cubicle along with a stylish sink vanity unit.

Externally, the property benefits from a landscaped west-facing rear garden, mainly laid to patio with attractive flower beds, offering the perfect space to relax and enjoy the afternoon and evening sun. There is also a useful outbuilding/store providing additional storage.

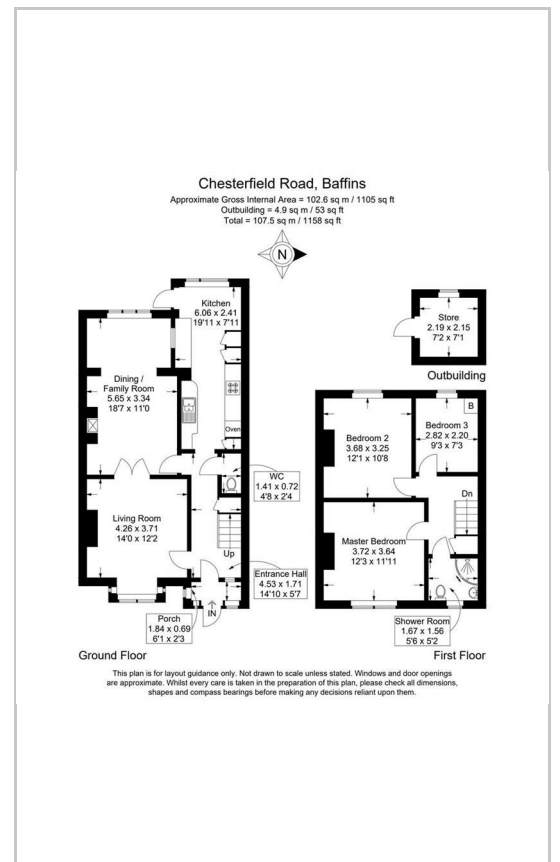
The property has clearly been lovingly cared for throughout and is presented in good condition, making it an ideal move-in ready home in one of Baffins' most desirable residential locations.

Early viewing is highly recommended!

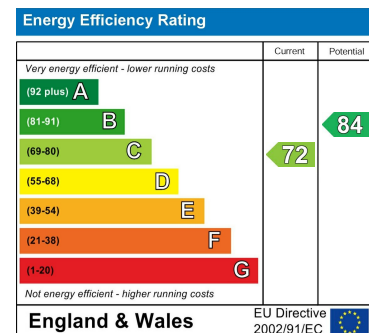
Area Map



Floor Plans



Energy Efficiency Graph



These particulars, whilst believed to be accurate are set out as a general outline only for guidance and do not constitute any part of an offer or contract. Intending purchasers should not rely on them as statements of representation of fact, but must satisfy themselves by inspection or otherwise as to their accuracy. No person in this firm's employment has the authority to make or give any representation or warranty in respect of the property.

Tangier Road, PO3 6PQ
 Tel: 02394 217317 Email: sarah@soldby.uk www.soldby.uk