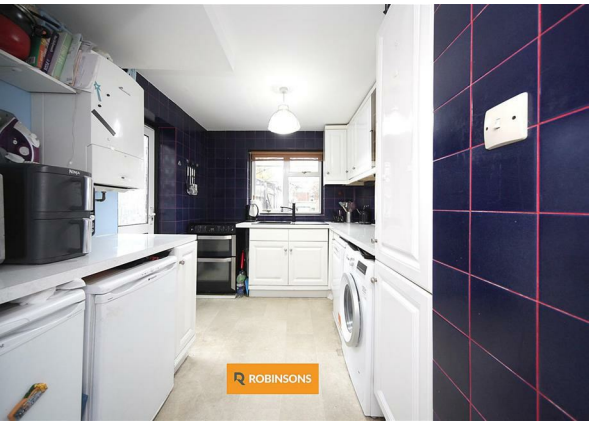
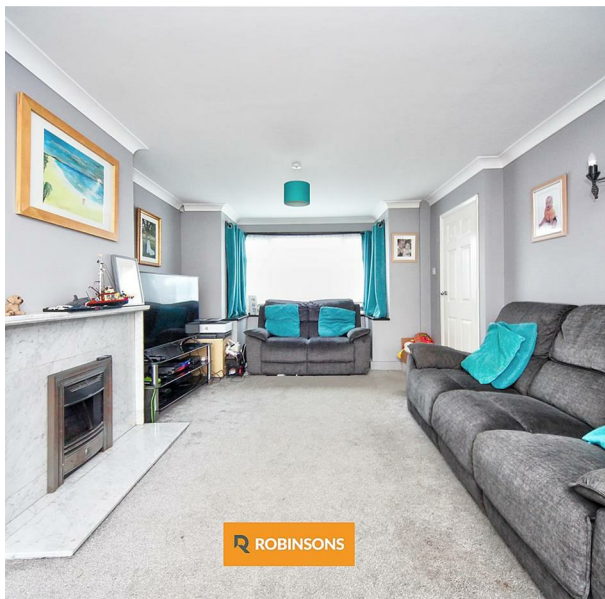
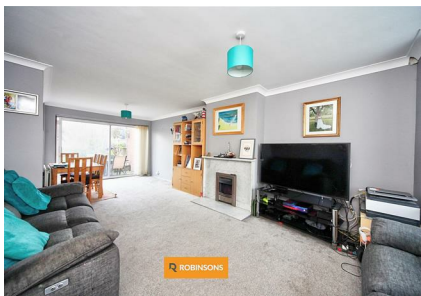


28 Lockington Crescent, Dunstable, LU5 4SU
Offers Over £390,000

ROBINSONS



IMMACULATEDLY PRESENTED & EXTENDED THREE BEDROOM FAMILY HOME WITH GARAGE, DRIVEWAY & LOFT ROOM POTENTIAL (STPP) – PRIME EAST DUNSTABLE LOCATION

This is a fantastic opportunity to secure a spacious and highly versatile family home in one of East Dunstable's most sought-after locations. Offering approximately 79.9 sq m (860 sq ft) of well-planned accommodation (see floorplan), plus a loft room with clear potential to create a fourth bedroom (STPP), this property is perfectly suited to growing families and upsizers alike.

The ground floor is designed with modern family living in mind. A welcoming entrance hall leads into an impressive 24'11" dual-aspect living/dining room, flooded with natural light and ideal for both everyday living and entertaining guests. The separate kitchen sits to the rear with direct access to the garden, offering excellent scope to open up or extend (STPP) to create a stunning kitchen/family hub.

Upstairs, the first floor layout provides three well-proportioned bedrooms, including a generous principal bedroom and a further double, plus a versatile third room ideal for a nursery, home office or dressing room. A family bathroom completes the floor.



Total Area: 79.9 m² ... 860 ft²

Floorplan produced by Woodside Photography
 Floorplan is for illustration purposes only and all measurements are approximate



20 West Street
 Dunstable
 Bedfordshire
 LU6 1SX
 01582 661112
sales@robinsons-estates.co.uk
<https://www.robinsons-estates.co.uk>

