



## North Hill, Highgate, N6 Monthly Rental Of £1,625



800 finchley road, hampstead garden suburb, london, nw11 7tj

telephone 020 8458 5000 facsimile 020 8209 2068

email [sales@litchfields.com](mailto:sales@litchfields.com) web [litchfields.com](http://litchfields.com)

offices also in highgate

**A bright and beautifully presented 1 bedroom top floor flat in this stylish Art-Deco purpose-built block. There is also a secure private storage shed. Very well located for local convenience shopping, Highgate Tube on the Northern Line, Highgate Woods and all the amenities of historic Highgate Village, Waterlow Park and the delights of Kenwood and the Heath just to the West. Early viewing highly recommended!**

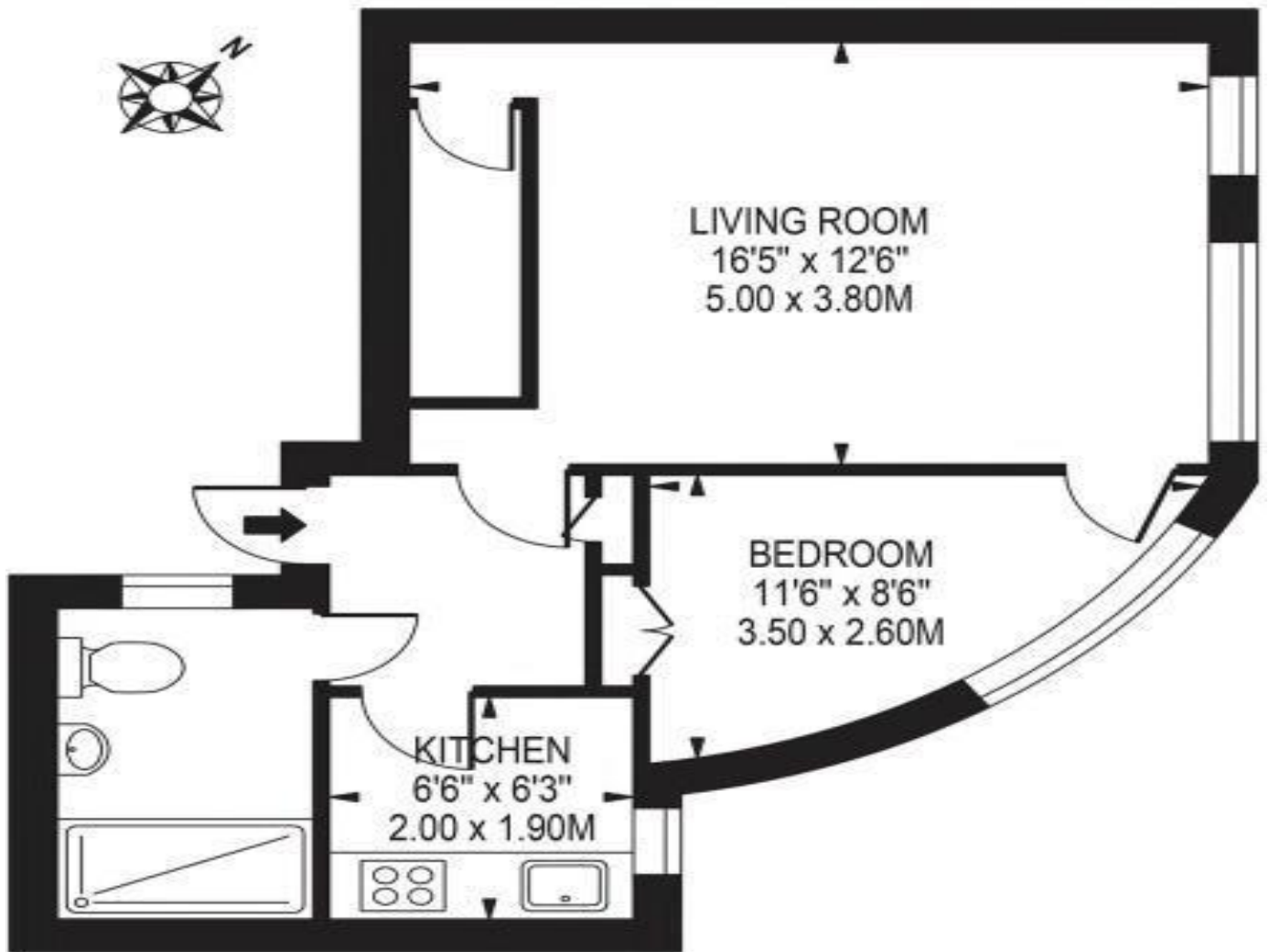
**1 bedroom | Reception | Bathroom | Separate kitchen | Close to Highgate tube | Also close to Highgate shops, buses and open spaces | Close Highgate Woods | Close excellent Gastropubs and convenience stores | Offered Furnished | Available Now | EPC = D |**





## BROADLANDS NORTH HILL

APPROXIMATE GROSS INTERNAL FLOOR AREA: 412 SQ FT - 38.30 SQ M



### THIRD FLOOR

FOR ILLUSTRATION PURPOSES ONLY

THIS FLOOR PLAN SHOULD BE USED AS A GENERAL OUTLINE FOR GUIDANCE ONLY AND DOES NOT CONSTITUTE IN WHOLE OR IN PART AN OFFER OR CONTRACT. ANY INTENDING PURCHASER OR LESSEE SHOULD SATISFY THEMSELVES BY INSPECTION, SEARCHES, ENQUIRIES AND FULL SURVEY AS TO THE CORRECTNESS OF EACH STATEMENT. ANY AREAS, MEASUREMENTS OR DISTANCES QUOTED ARE APPROXIMATE AND SHOULD NOT BE USED TO VALUE A PROPERTY OR BE THE BASIS OF ANY SALE OR LET.

**For similar properties please visit our website [www.litchfields.com](http://www.litchfields.com)**

**Or call us on 0208 458 8000**