



JULES MIDDLETON

exp[®] UK

@ jules.middleton@exp.uk.com

🌐 julesmiddleton.exp.uk.com

☎ 07539 429 451

26 Hunters Way,
Guide Price £525,000

3 1 1

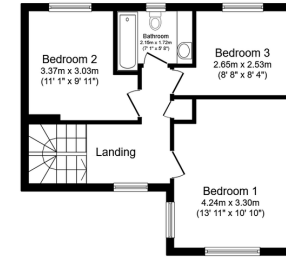


- Refurbished and immaculate family home.
- Smart heating, triple glazing, water softener.
- Driveway for two, low-maintenance garden.
- Side access.
- Short drive to WGC town centre and station.
- Three double bedrooms, new bathroom.
- Modern open plan kitchen/diner.
- Detached cabin with garden office potential.
- Walk to green spaces, local shops and schools.
- Please quote JM0792 when enquiring.

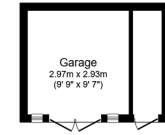




Ground Floor
Floor area 41.7 sq.m. (449.2 sq.ft.)



First Floor
Floor area 48.2 sq.m. (518.4 sq.ft.)



Garage
Floor area 12.5 sq.m. (134.1 sq.ft.)

Total floor area: 102.4 sq.m. (1,102 sq.ft.)

This floor plan is for illustrative purposes only. It is not drawn to scale. Any measurements, floor areas (including any total floor area), openings and orientations are approximate. No details are guaranteed, they cannot be relied upon for any purpose and do not form any part of any agreement. No liability is taken for any error, omission or misstatement. A party must rely upon its own inspection(s). Powered by www.Propertybox.io



Beautifully presented three bedroom home, boasting off-street parking and large private garden. Perfectly positioned within walking distance of highly regarded schools, select amenities and picturesque countryside walks. Finished to an exceptional standard throughout, this elegant home is move in ready.