



# HARDINGS



Canterbury Mews  
Guide Price £600,000

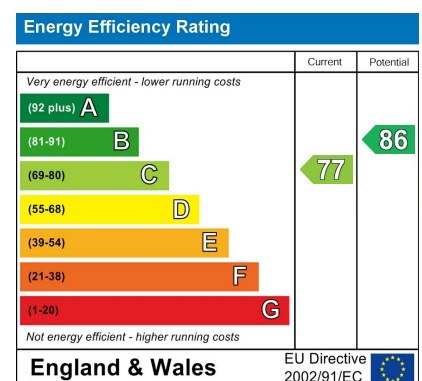




A well-presented three bedroom, end-terraced home, offering spacious and versatile accommodation, ideally positioned in a quiet residential location just a short distance from Windsor Town Centre.

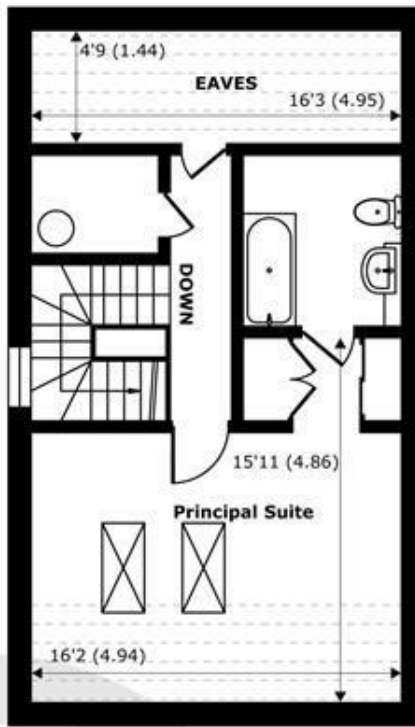
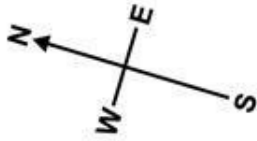
The property is maintained in good condition throughout and features a modern kitchen, ideal for family living and entertaining. The accommodation is complemented by two bathrooms plus a convenient downstairs WC. Externally, the home benefits from two allocated parking spaces along with the added convenience of rear access.

An excellent opportunity to secure a well-located home with great transport links, amenities, and schools nearby and is offered to the market with no onward chain.

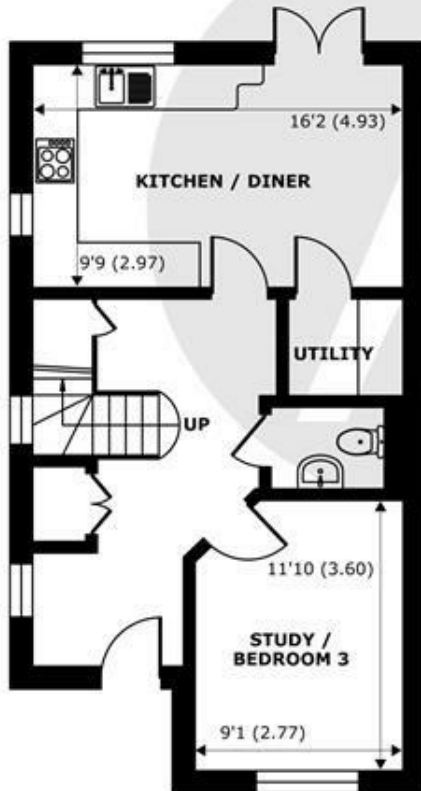


## Features

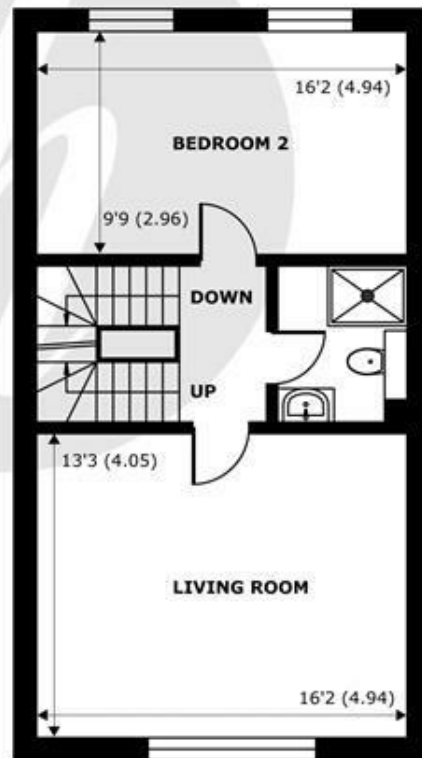
- Three Bedrooms
- End Terraced Town House
- Good Condition Throughout
- Rear Access
- No Onward Chain
- Two Allocated Parking Spaces
- Large Kitchen Opening to Private Garden
- Two Bathrooms & Downstairs WC
- Short Distance to Windsor Town Centre
- Close to Well Regarded Schools



**SECOND FLOOR**



**GROUND FLOOR**



**FIRST FLOOR**

## Canterbury Mews, Windsor, SL4

Approximate Internal Area = 1284 sq ft / 119.2 sq m

Limited Use Area(s) = 157 sq ft / 14.5 sq m

For identification only - Not to scale



Floor plan produced in accordance with RICS Property Measurement 2nd Edition, Incorporating International Property Measurement Standards (IPMS2 Residential). © nichecom 2025. Produced for Hardings. REF: 1387967





11 High Street, Windsor, Berkshire, SL4 1LD,  
T: 01753 833 118 | E: [info@hardings.co.uk](mailto:info@hardings.co.uk)  
[www.hardings.co.uk](http://www.hardings.co.uk)

