



LB

Loporto Browne

— RESIDENTIAL —

Brompton Mews, N12

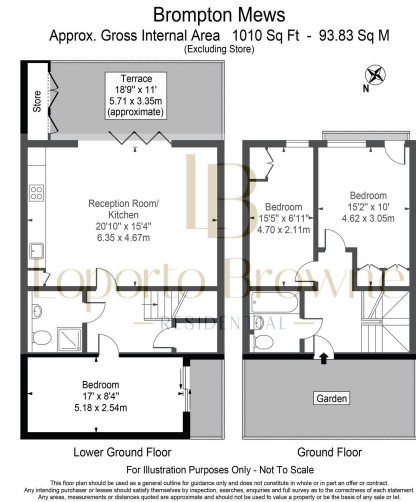
£719,000

3 2 1



- 3 bed, 2 bathrooms Detached Mews House with over 1000 sq.ft
- Two allocated private parking spaces within gated development
- Open plan living room and kitchen
- Situated within easy reach of local cafés, shops, and green open spaces, the property
- Located in a suburban calm with excellent connectivity.
- Set within a private gated community
- Private patio and separate communal garden
- Modern finish with a high standard
- Quiet residential location
- LB Residential are pleased to be instructed, watch the video

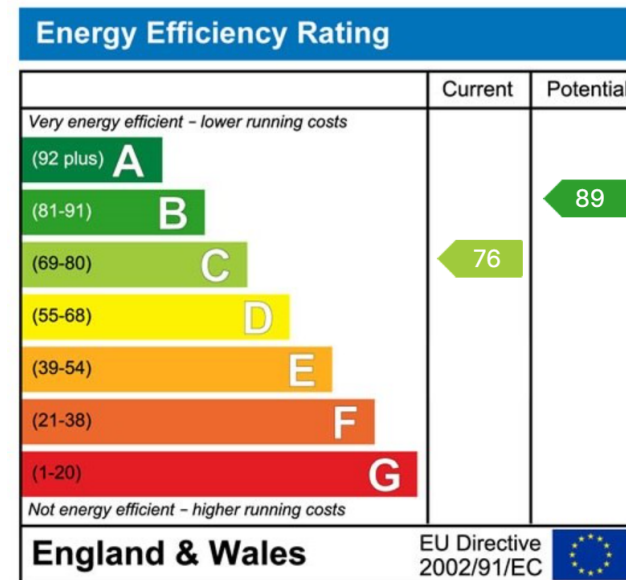




Gated 3-Bedroom Home, 12-Min Walk to West Finchley Tube, Private Parking, Quiet Setting, this architecturally distinctive detached home is offered for sale through Loporto Browne Residential.

Originally built in the late 19th century as a local dairy, the property later served as office space before its transformation into a stunning residential home by Nick Baker Architects.

This unique three-bedroom freehold house is semi-submerged, with a spacious open-plan lower floor designed to maximize natural light. Bi-folding doors connect the living and dining areas to a private patio, perfect for hosting or enjoying quiet moments outdoors. The kitchen blends seamlessly with the space, featuring modern finishes and discreet spotlights. Additional conveniences include a generous storage cupboard



LB Residential

Grand Union Studios
332 Ladbroke Grove
W10 5AD

Email: hello@lbresidential.co.uk
Web: www.lbresidential.co.uk
Tel: 0203 062 6262