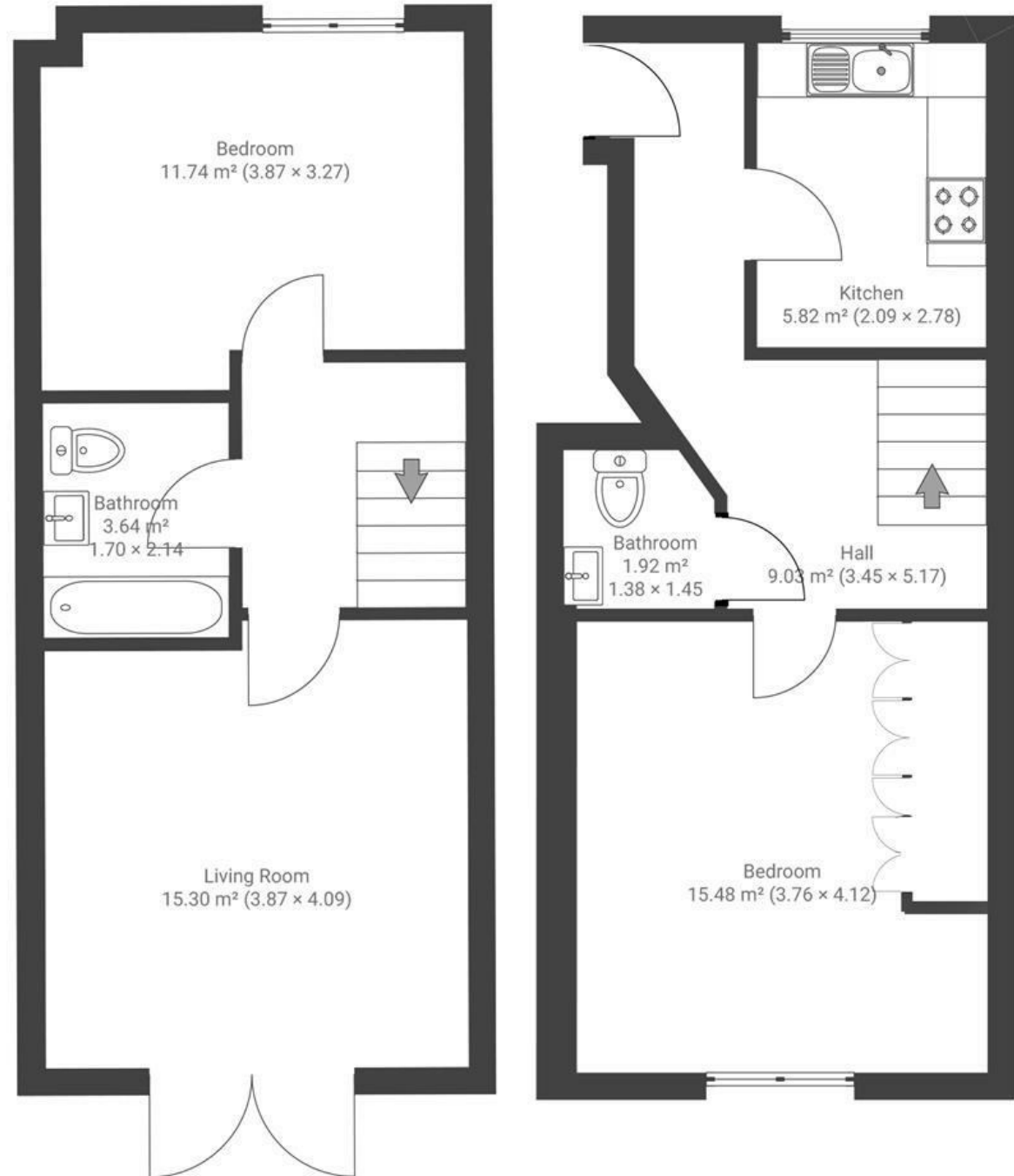


# Berkeley Place

## BEDMINSTER

APPROXIMATE FLOOR AREA  
70 SQM / 753 SQFT



**Boardwalk**

# Cotswold Road , BRISTOL

£  
£290,000

zZz  
2 Bedrooms

📍  
BS3 4NR

🦆  
2 Bathrooms

*"I love my flat - it's an absolute gem. It's light, airy, cosy and economical to run (it practically runs itself), the neighbours are friendly (and quiet too). I love nothing more than to grab a coffee and pastry from the Fox & West deli and sit out in the patio which is a total sun trap in the summer. The area has a chilled and friendly vibe and the flat is perfectly placed, I can walk into town to see friends or pop around to north street in 15 minutes. The parking space is a godsend and a rare asset to find in the area."*

