



Westbourne Terrace, W2

£749,995

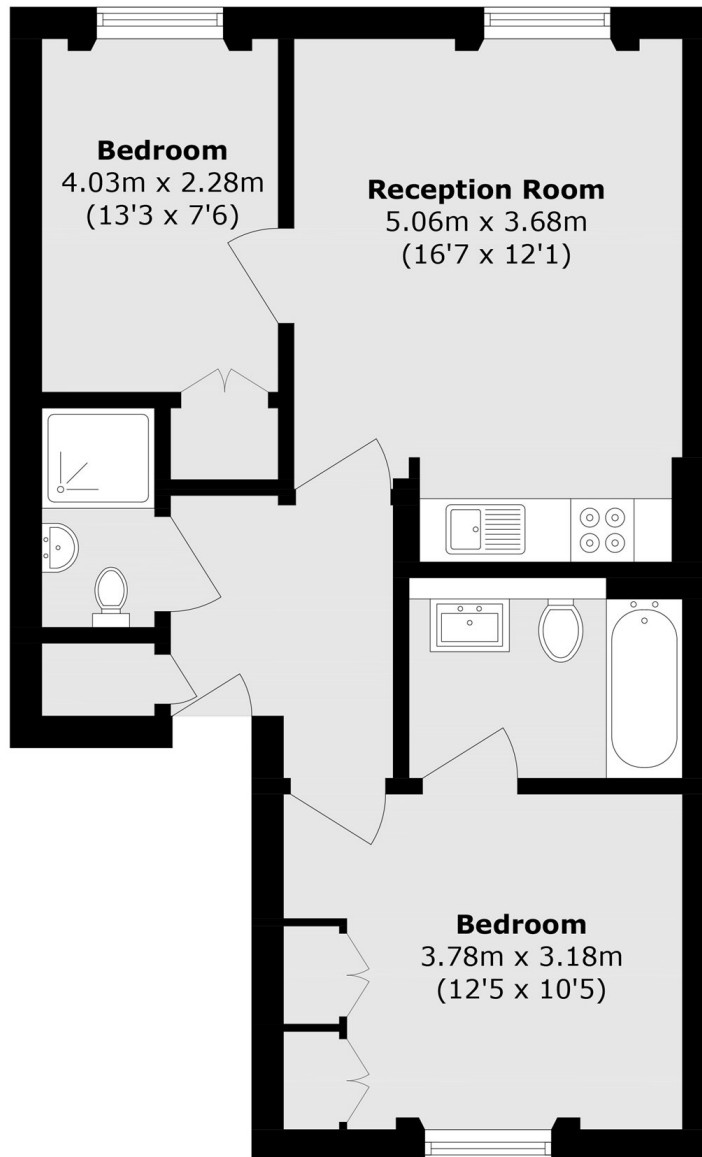
A stylishly refurbished two double bedroom apartment on the second floor of a white stucco fronted building. The property offers two double bedrooms, two bathrooms (one en suite) and an open plan kitchen.

Westbourne Terrace is a prime location moments from Paddington Station, providing excellent transport links across London and direct connections to Heathrow. Hyde Park is a short walk away, with Westbourne Grove and the newly redeveloped Queensway close by, offering a wide range of shops, and leisure facilities.

Features

- Two Bedrooms
- Two Bathrooms
- Open Plan
- Stylishly Refurbished
- White Stucco Fronted
- Close To Hyde Park

Westbourne Terrace, London, W2



Total area (approx.): 53.8 sq. m (579.1 sq. ft)