



London Road

Leigh-on-Sea

- A COLLECTION OF 5 BRAND NEW APARTMENTS
- GROUND FLOOR APARTMENT
- 10 YEAR WARRANTY
- PARKING TO REAR



Guide Price £280,000 to £300,000

River Court is a stunning collection of 5 luxury apartments all presenting their own unique appearance with quality modern finishes, situated in a popular area of Leigh-on-Sea.





*****Guide Price - £280,000 to £300,000*****

Welcome to Flat 1, River Court, a stunning apartment that belongs to a collection of 5 luxury apartments situated in a popular area of Leigh-on-Sea.

The property features a fantastic open plan living room and kitchen area, with a sleekly designed modern kitchen equipped with integrated appliances as well as an island for breakfast bar seating. Complimented with granite worktops and herringbone flooring. This is an ideal space for entertaining friends and family.

Further to the property you have a stylish shower room which is fully tiled with high end finishes.

To the rear of the property you have the double bedroom which has French doors that directly opens to your own patio area.

Externally the apartment comes with an allocated parking space.



River Court sits on an ideal position on London Road close by to all local amenities, which provides the upmost convenience for a future buyer. The block is within close distance to Leigh-on-Sea train station, Old Leigh, as well as easy access to the A127 and A13.

OPEN PLAN LIVING & KITCHEN

26' 8" x 13' 2" (8.13m x 4.01m)

HALL

7' 3" x 3' 6" (2.21m x 1.07m)

BATHROOM

BEDROOM

14' 4" x 11' 4" (4.37m x 3.45m)

TENURE

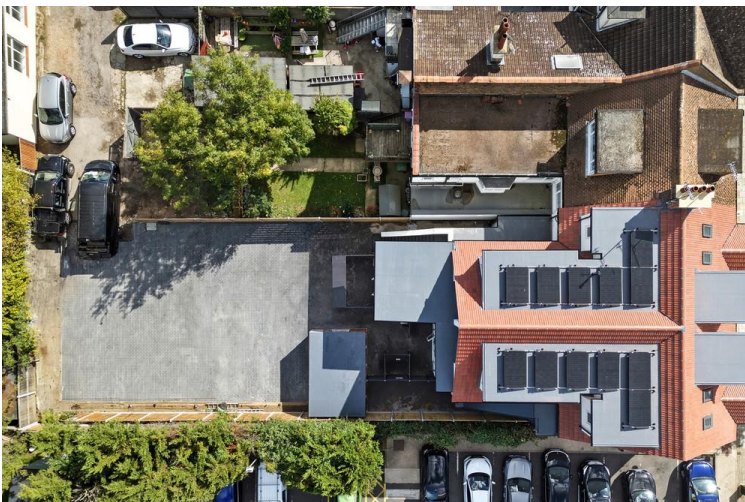
SHARE OF FREEHOLD

COUNCIL TAX - TBC

EPC - TBC

WARRANTY - 10-YEAR NEW BUILD

These particulars are accurate to the best of our knowledge but do not constitute an offer or contract. Photos are for representation only and do not imply the inclusion of fixtures and fittings. The floor plans are not to scale and only provide an indication of the layout.



Ground Floor



Regulated by RICS

t. 01702 34 11 77
More than an estate agent
www.hairandson.co.uk

Residential Sales
190 London Road
Southend-On-Sea
Essex SS1 1PJ

