



**HUNTERS**<sup>®</sup>  
HERE TO GET *you* THERE

Barn Two The Rye, Eaton Bray, Dunstable, LU6 2BQ

# Barn Two The Rye, Eaton Bray, Dunstable, LU6 2BQ

£475,000

- BRAND NEW BARN CONVERSION
- OPEN PLAN KITCHEN/LIVING ROOM
- READY SPRING 2026
- VILLAGE LOCATION
- SURROUNDED BY COUNTRYSIDE
- TWO BEDROOMS
- SOLID OAK BESPOKE MADE KITCHEN
- PRIVATE DEVELOPMENT OF THREE BARN CONVERSIONS
- DRIVEWAY PARKING
- ENCLOSED LANDSCAPED GARDEN

Set within an exclusive private development of just three individually designed barn conversions, this exceptional two-bedroom home offers the perfect balance of countryside charm and contemporary living. Surrounded by rolling fields on the edge of Eaton Bray, this brand new conversion is being completed to the highest standards, blending rustic features with modern craftsmanship and high-quality finishes throughout.

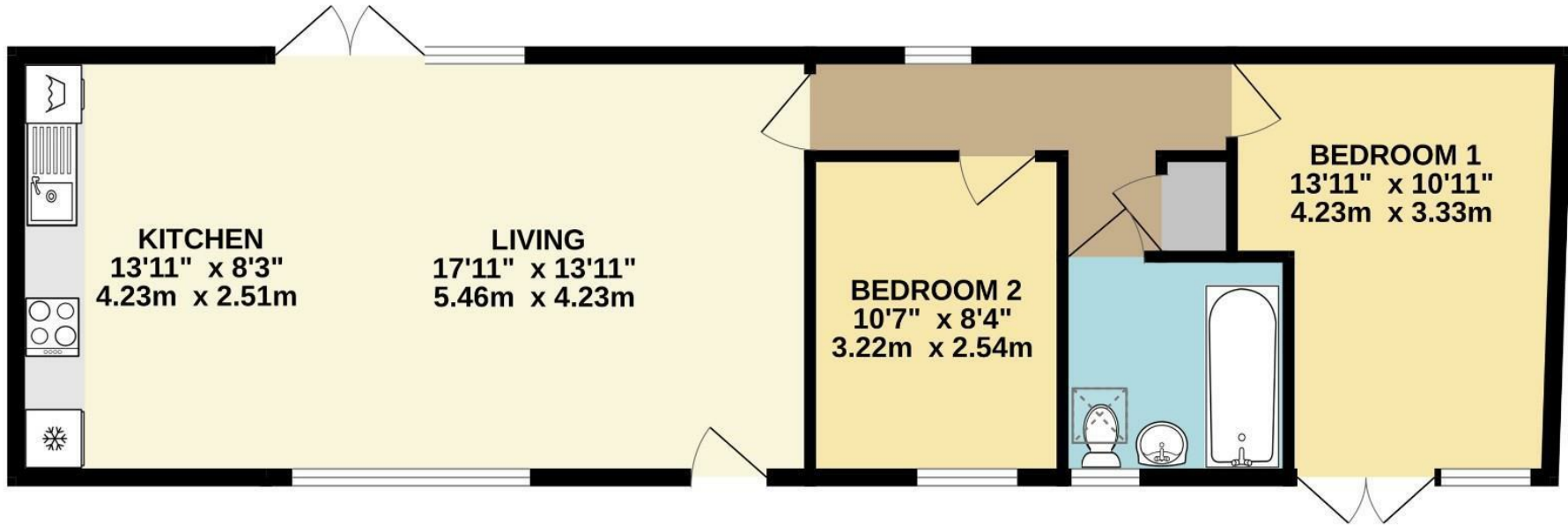
At the heart of the home lies a beautifully designed open-plan kitchen and living area, ideal for both relaxing and entertaining. The space will feature a bespoke, solid oak kitchen, handcrafted to bring natural warmth and timeless character, complemented by carefully considered lighting and finishes to create a welcoming and stylish living environment. Vaulted ceilings and large windows will flood the space with natural light, highlighting the stunning architectural details and providing uninterrupted views of the surrounding landscape.

Two generously sized bedrooms will offer peaceful retreats, while a modern, well-appointed bathroom will combine sleek design with functionality. Outside, the property enjoys a private, enclosed garden—perfect for alfresco dining or quiet evenings—along with driveway parking for multiple vehicles. This unique home offers not just a place to live, but a lifestyle defined by peace, privacy, and connection to nature.

Located in the sought-after village of Eaton Bray, with excellent access to local amenities, countryside walks, and nearby towns, this is a rare opportunity to own a character-filled, newly built home in a truly idyllic setting. Now available to reserve ahead of completion in Spring 2026.

Hunters Tring & Surrounding Villages 83 High Street, Tring, HP23 4AB | 01442 500252  
tring@hunters.com | www.hunters.com

PLOT 2  
619 sq.ft. (57.5 sq.m.) approx.



TOTAL FLOOR AREA : 619 sq.ft. (57.5 sq.m.) approx.

Whilst every attempt has been made to ensure the accuracy of the floorplan contained here, measurements of doors, windows, rooms and any other items are approximate and no responsibility is taken for any error, omission or mis-statement. This plan is for illustrative purposes only and should be used as such by any prospective purchaser. The services, systems and appliances shown have not been tested and no guarantee as to their operability or efficiency can be given.

Made with Metropix ©2025

