



Guide Price
£325,000

Leasehold

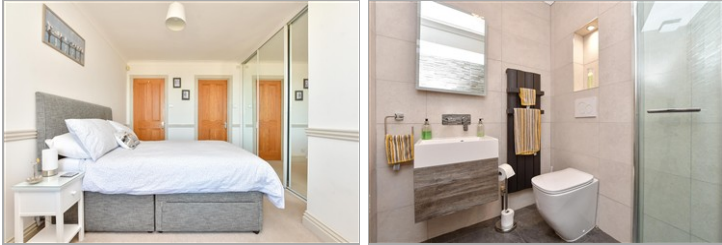
2x  2x  1x 

**Bayview Manor, Sea
Road, Westgate-On-Sea,
Kent, CT8**

OVER 60?

Secure this property
for up to **59% less!**

Wards
Helping you move forwards



Main features

- **Stunning sea views from both bedrooms, overlooking the expansive coastline of Westgate Bay**
- **Sold with no chain**
- **Luxury bathroom, immaculate condition with a modern finish**
- **Beautifully presented, open plan lounge/dining area**
- **Private garage and off-street parking**

Accommodation

SPLIT LEVEL GROUND FLOOR

Entrance Hallway

Kitchen : 9'11 x 8'5 (3.02m x 2.57m)

Dining Area

Lounge : 19'6 x 11'9 (5.95m x 3.58m)

Bedroom 1 : 14'2 x 9'3 (4.32m x 2.82m)

En-Suite Bathroom

Bedroom 2 : 14'2 x 7'10 (4.32m x 2.39m)

Shower Room

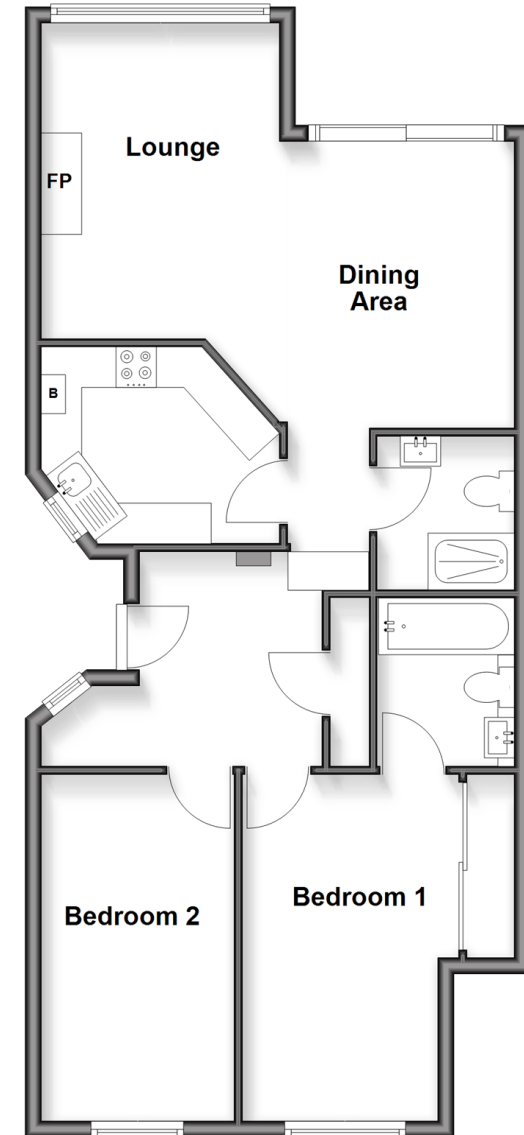
OUTSIDE

Garage and Off Road Parking

Communal Garden

Split Level Ground Floor

Approx. 70.5 sq. metres (759.3 sq. feet)



Call Birchington - 01843 842551 ■ wardsof Kent.co.uk

- Legal advice should be taken to verify fixtures/fittings, planning, alterations and/or lease details
- Appliances & services are untested, dimensions are approximate and floor plans are not to scale
- Through a Homewise Home For Life Plan people aged 60+ can secure this property for up to 50% less, by purchasing a Lifetime Lease.



10129821/20251003/AT/AT