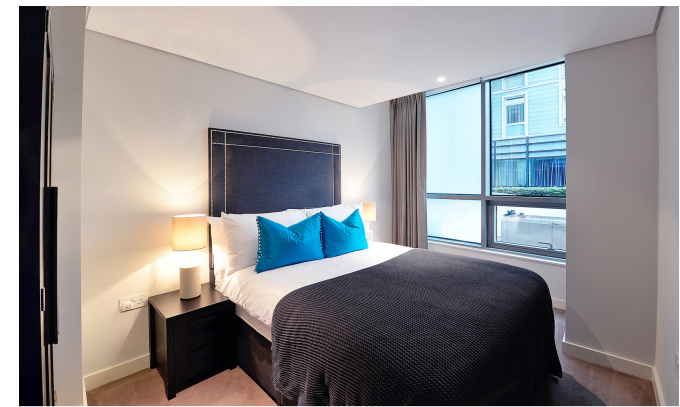




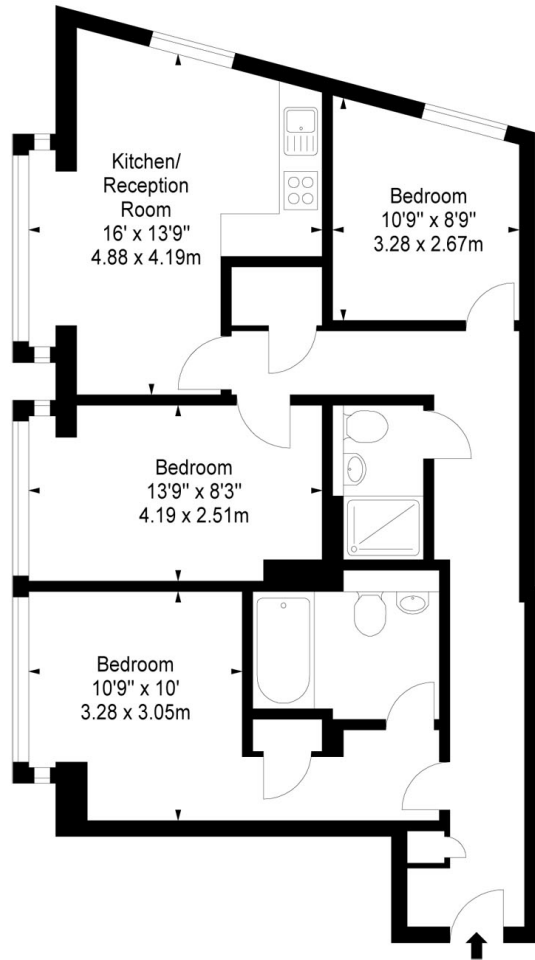
INTERLET

MERCHANT SQUARE, PADDINGTON, LONDON W2
£990 PW



A stunning 3 bedroom, 2 bathroom apartment situated on the first floor of this prestigious building in Paddington, which features 24 hour concierge, lift service, and secure underground parking. The flat comprises modern living and entertaining space with a beautiful reception room, a modern fully fitted, open plan kitchen, three bedrooms (Master bedroom with en-suite), two bathrooms and ample storage space. Available FURNISHED or UNFURNISHED. Adjacent to the Grand Union Canal, Merchant Square is a new development and it is conveniently located moments from the transport and shopping amenities of Paddington (Bakerloo, Hammersmith & City, Circle and District Lines) and Edgware Road (Circle, District and Bakerloo lines). West End's amenities are a leisurely walk away through tree-lined streets and green open spaces.[...]

lettings@interlet.com
+44(0)20 7795 6525
www.interlet.com



Important Notice

Interlet and their clients give notice that: 1) They are not authorised to make or give any representations or warranties in relation to the property, either here or elsewhere. The particulars do not form part of any offer or contract and must not be relied upon as statements or representations of fact. 2) Any areas, measurements, and distances are approximate. The text, images, and plans are for guidance only and are not necessarily comprehensive. It should not be assumed that the property has all necessary planning, building regulation, or other contents. Interlet has not tested any services, equipment, or facilities. Prospective tenants must satisfy themselves by inspection or otherwise. Please note that the local area may be affected by aircraft noise, you should make your own inquiries regarding any noise in the area before you make an offer.

iNTERLET
SALES & LETTINGS

Welcome home.