



SIBLEY PARES

CHARTERED SURVEYORS & ESTATE AGENTS



Herts Crescent

Loose, Maidstone, Kent, ME15 0AX

GUIDE PRICE £425,000 - £440,000

Herts Crescent

Loose, Maidstone, Kent, ME15 0AX

Key Features

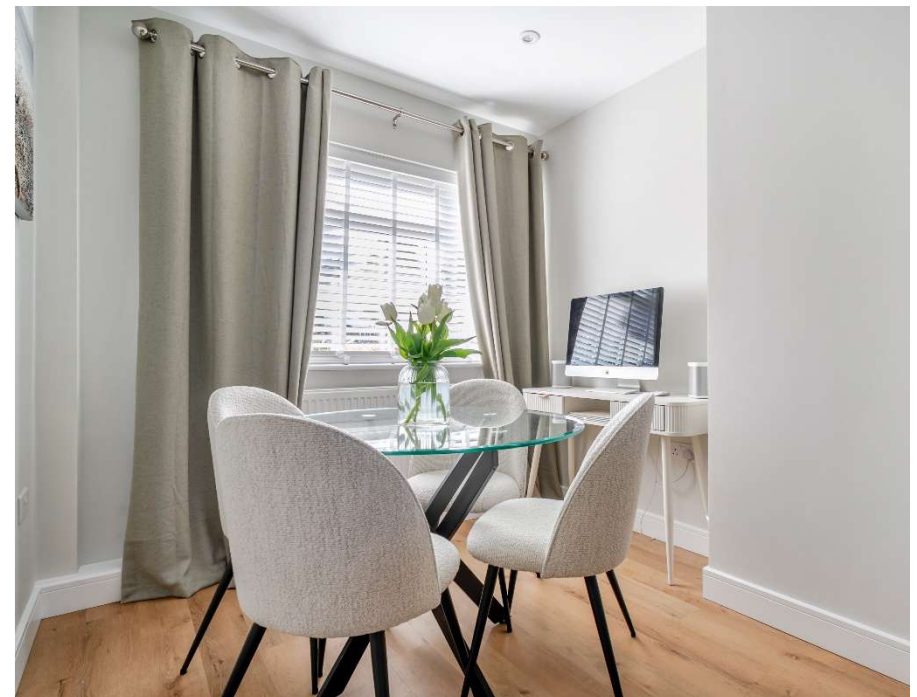
- Three Bedroom Semi-Detached Home
- Downstairs Cloakroom
- Large Private Rear Garden
- Immaculately Refurbished Throughout
- Large Driveway
- Within Walking Distance of Local Schools and Amenities

Description

Three bedroom semi-detached family home which has been extensively refurbished by the current owners and located within easy reach of local schools and amenities.

The property has been immaculately finished throughout and comprises entrance hall, open plan 'L' shaped kitchen/diner with integrated appliances, including double ovens, and breakfast bar, living room with French doors opening to the private rear garden, utility room, downstairs cloakroom, primary bedroom with built in wardrobes, two further double bedrooms and fully tiled family bathroom with a separate shower.

Externally the property benefits from a good size private rear garden, with a large patio area and the rest laid to lawn, a storage shed and a driveway with parking for multiple vehicles with an EV charging point.



Herts Crescent

Loose, Maidstone, Kent, ME15 0AX

Location

Herts Crescent is located just a short distance away from Loose Village where you will benefit from all amenities such as doctors, hairdressers, newsagent, Sainsbury Local and the local Primary School. Loose Valley conservation area is also close by with idyllic walks. A number of local pubs/restaurants are also within easy reach.

Maidstone Town Centre is only a short drive or bus journey away and provides a shopping mall, restaurants, pubs, cafe's and the Odeon cinema complex. Everything you need is a stone's throw away including a good choice of primary and secondary schools. The closest railway stations are Maidstone East and West, offering direct lines to London Victoria and St Pancras International.

■ EPC Rating C

■ Council Tax Band C

■ Maidstone Borough Council

■ For Broadband Speed Refer to Ofcom Website

For all Viewings and Enquiries contact:



Mr Mitchell Bourner MNAEA MARLA
mitchell.bourner@sibleypares.co.uk



Mr Marcus Monger
marcus.monger@sibleypares.co.uk



SIBLEY PARES

CHARTERED SURVEYORS & ESTATE AGENTS

01622 673086

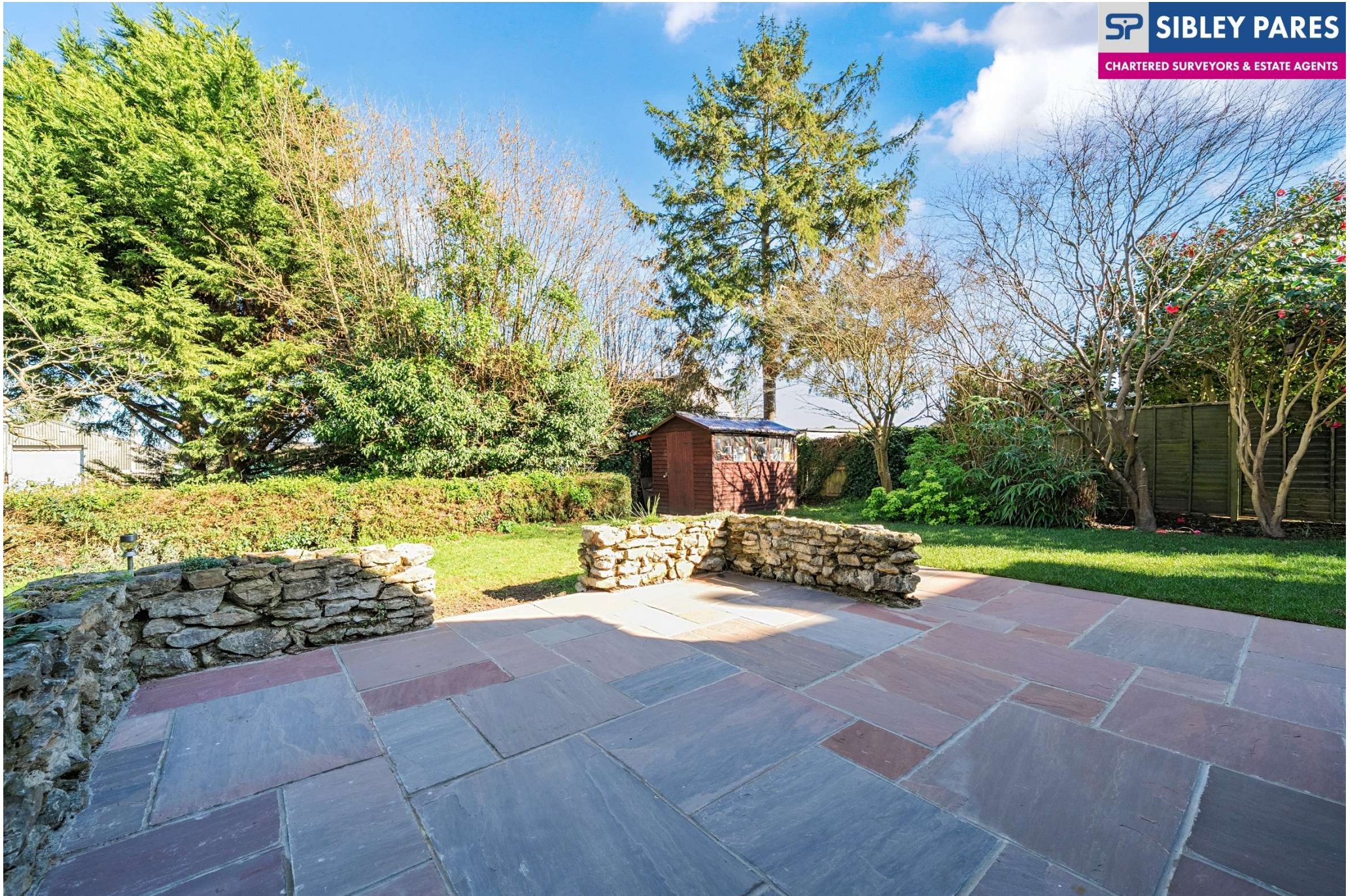
sibleypares.co.uk



SIBLEY PARES

CHARTERED SURVEYORS & ESTATE AGENTS



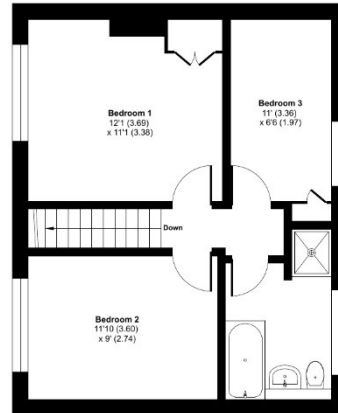


Floorplan and Dimensions

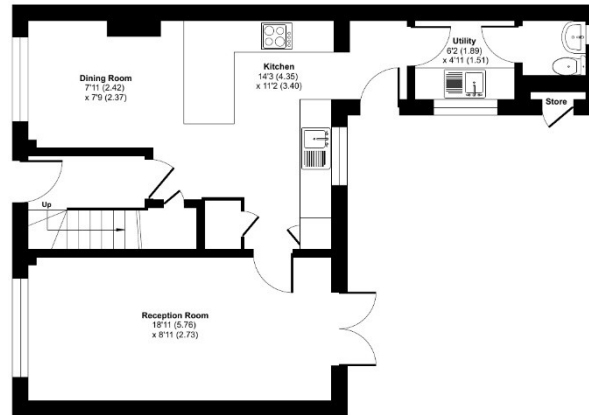
Herts Crescent, Loose, Maidstone, ME15

Approximate Area = 968 sq ft / 89.9 sq m (excludes store)

For identification only - Not to scale



FIRST FLOOR



GROUND FLOOR

 Floor plan produced in accordance with RICS Property Measurement 2nd Edition, Incorporating International Property Measurement Standards (IPMS2 Residential). © richcom 2026. Produced for Sibley Pares Estate Agents. REF: 1423146

NOTE: Rental, prices or any other charges are inclusive of VAT unless otherwise stated.
MISREPRESENTATION ACT 1967. These particulars are believed to be correct, their accuracy cannot be guaranteed and are expressly excluded from any other contract. Any intending purchaser must satisfy himself by inspection or otherwise as to the correctness of each of the statements contained in these particulars. No fittings, appliances or services mentioned have been tested by Sibley Pares. Please note that in accordance with Money Laundering Regulations, we are now required to obtain proof of identity for purchasers.



1 Ashford Road, Maidstone, Kent ME14 5BJ
sibleypares.co.uk | Maidstone (01622) 673086 | Ashford (01233) 629281

Partners: Sarah Raggett, BSc (Hons) MRICS | Phillip Hubbard, BA (Hons) MRICS
Sibley Pares Chartered Surveyors is a trading name of Sibley Pares LLP

Registered in England and Wales No: OC400776. | Registered as above. | VAT Reg No: 218 5130 30.