



Draycott Place, SW3

£1,350,000

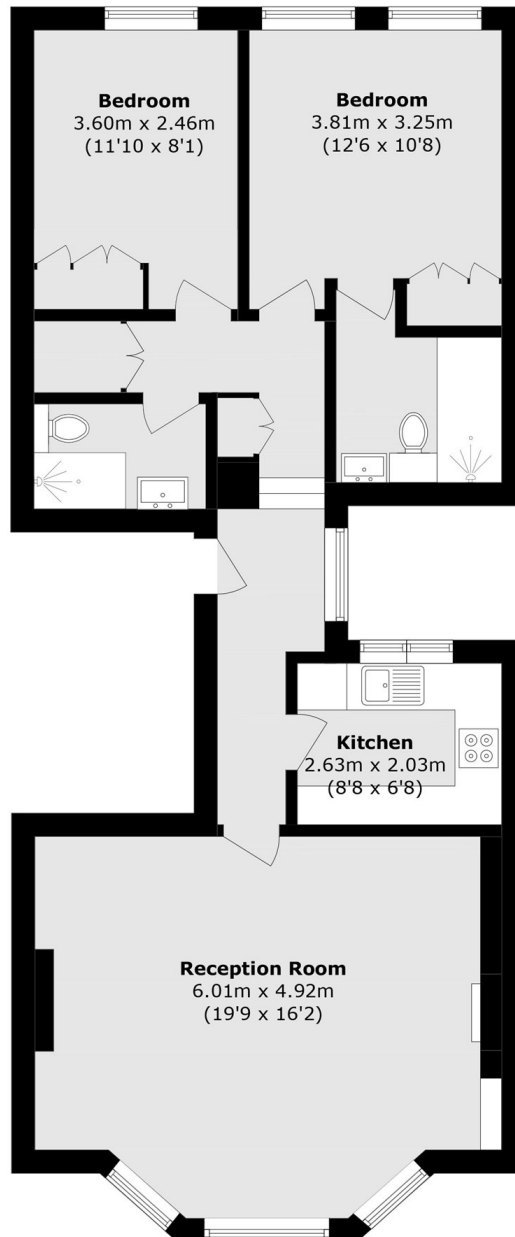
A lovely two bedroom apartment moments from Pavilion Road. This property is filled with light, both bedrooms have their own bathrooms and the building has access to communal gardens.

Draycott Place runs parallel to the King's Road which is home to plenty of boutique shops and restaurants. Sloane Square and South Kensington tube station are both within walking distance.

Features

- Large Reception Room
- Two Bedrooms
- Second Floor
- Communal Garden
- Two Bathrooms
- Popular Location

Draycott Place, London, SW3



Second Floor

Total area (approx.): 74.6 sq. m (802.9 sq. ft)