



Local to you - contactable when you need us

 **KMJProperty**
Your local independent Estate Agent

Park Road, Forest Row

Offers In Region Of £650,000

3 1 2



Upon entering, you're welcomed into a central hallway that provides access to the ground floor rooms. Immediately to your right is a separate reception room—complete with a fireplace and full of charm. This space is ideal as a home office, playroom, snug or a further bedroom, offering flexible use to suit modern living.

To the left lies the main lounge—a spacious and inviting room enhanced by a large bay window that floods the space with natural light. The second fireplace adds a cosy focal point, making it the perfect place to relax and unwind.

At the rear of the property, the kitchen/diner is a generous and social space, ideal for both everyday family living and entertaining. It offers plenty of room for cooking, dining, and spending time together, with space for a dining table and a natural hub feel to the home. Just off the kitchen, a small hallway leads to the rear of the property, providing handy access outdoors.

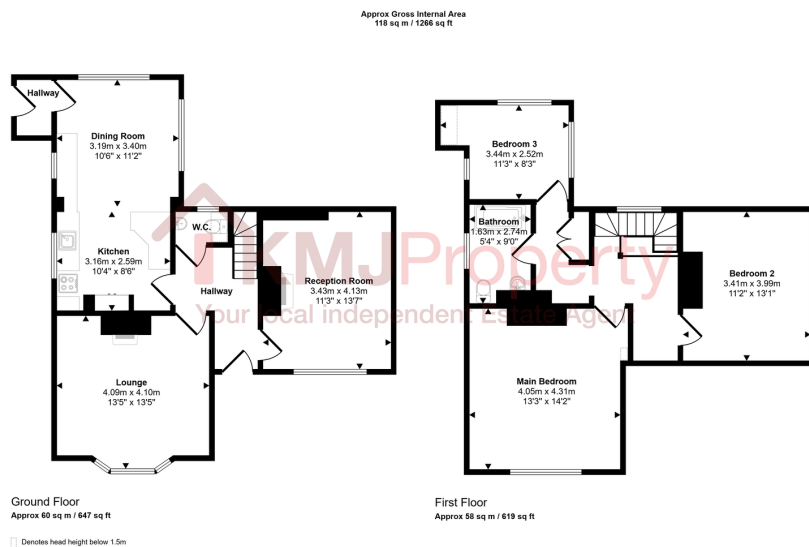
Completing the ground floor is a conveniently located WC, accessed from the central hallway.

Upstairs, a well-sized landing leads to three bedrooms and the family bathroom. The main bedroom, positioned at the rear, is a generous double with ample space for furnishings. The second bedroom, located at the front, is another spacious double, while the third bedroom is a good-sized single—ideal for a child's room, guest space, or home office.

The family bathroom is equipped with a shower over bath and serves all three bedrooms from a central position.

Externally, the home is surrounded by mature shrubbery, offering privacy and creating a peaceful, leafy setting that enhances the tranquil charm of this property.





- Detached
- Peaceful and Idyllic Setting
- 3 Well Proportioned Bedrooms
- Driveway
- Rustic Charm Throughout
- Reception Room with Fireplace
- Spacious Kitchen Diner
- Close to Local Amenities
- EPC: E
- Council Tax Band: F

