

LEASEHOLD



Apartment

# 9 IMPERIAL COURT WILLOW GROVE, CHISLEHURST, BR7 5BZ

Offers over

## £245,000

### FEATURES

- One Bedroom Second Floor Apartment
- Recently Redecorated and Well Presented
- Close To Chislehurst High Street
- Allocated Parking Space
- Modern Kitchen and Three Piece Bathroom
- Double Glazing and Updated Electric Heaters
- NO FORWARD CHAIN
- Internal Viewing Highly Recommended



# 1 Bedroom Apartment located in Chislehurst

Well positioned for Chislehurst High Street we are pleased to offer as a CHAIN FREE sale this bright one bedroom top floor apartment. Located on the second floor of Imperial Court, the recently redecorated accommodation on offer comprises communal entrance hall, living/dining room, modern fitted kitchen, dual aspect double bedroom and a three piece bathroom suite. Additional benefits of particular note include double glazing, upgraded electric heating system and an allocated parking space. Chislehurst has a wealth of shops, restaurants and pubs that are all on your doorstep and an internal viewing comes highly advised.

Call us on

**020 8301 5511**

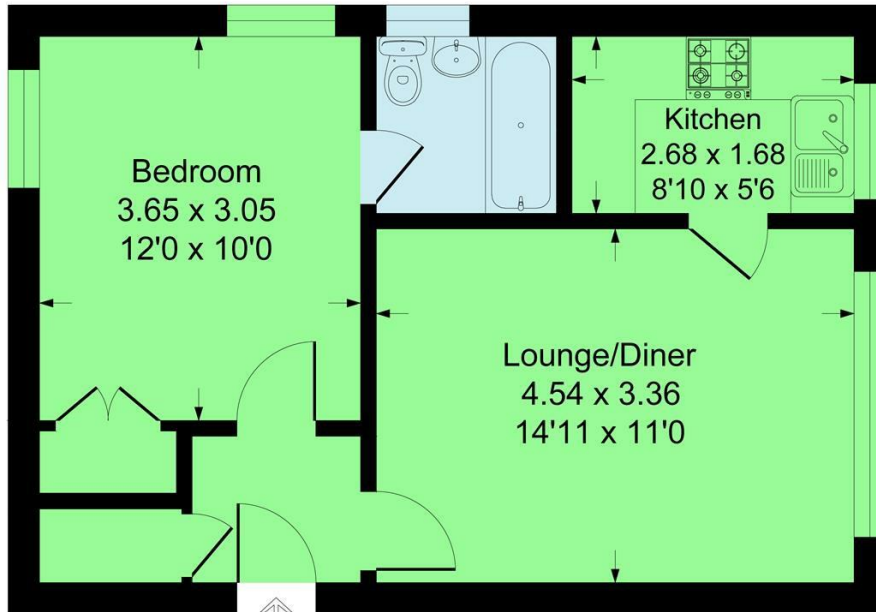
[sales@westwoodpropertyservices.co.uk](mailto:sales@westwoodpropertyservices.co.uk)

**Council Tax Band**

**C**

## Imperial Court, Willow Grove, BR7

Approximate Gross Internal Area 40.1 sq m / 432 sq ft



This plan is for layout guidance only. Not drawn to scale unless stated. Windows and door openings are approximate. Whilst every care is taken in the preparation of this plan, please check all dimensions, shapes and compass bearings before making any decisions reliant upon them.

Produced By Planpix



Energy Efficiency Rating		Current	Potential
<i>Very energy efficient - lower running costs</i>			
(92 plus) <b>A</b>			
(81-91) <b>B</b>			
(69-80) <b>C</b>			
(55-68) <b>D</b>			
(39-54) <b>E</b>			
(21-38) <b>F</b>			
(1-20) <b>G</b>		<b>27</b>	
<i>Not energy efficient - higher running costs</i>			
<b>England &amp; Wales</b>		EU Directive	
		2002/91/EC	

Agents Note: Whilst every care has been taken to prepare these particulars, they are for guidance purposes only. All measurements are approximate and are for general guidance purposes only and whilst every care has been taken to ensure their accuracy, they should not be relied upon and potential buyers are advised to recheck the measurements.

