



DRAYTON GARDENS, SW10

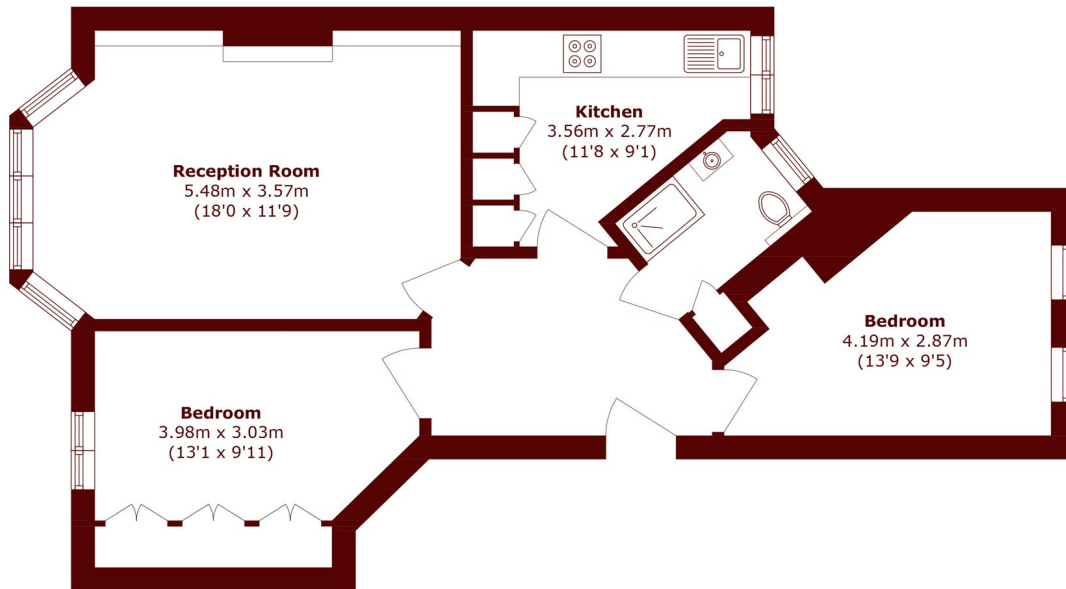
£1,200,000

This newly refurbished property comes to the market boasting high ceilings and wooden floors throughout. There are two double bedrooms with built in storage and a new bathroom. The flat benefits from a modern

Two Double Bedrooms
Refurbished Kitchen
First Floor

Red Brick Mansion Block
Share of Freehold
Chelsea

STEP INSIDE DRAYTON GARDENS



First Floor

Total area (approx.): 62.7 sq. m (674.9 sq. ft)

Earls Court
020 7590 0800

Energy Rating: We aim to make our particulars both accurate and reliable. However, they are not guaranteed; nor do they form part of an offer or contract. If you require clarification on any points then please contact us, especially if you're traveling some distance to view. Please note that appliances and heating systems have not been tested and therefore no warranties can be given as to their good working order

**MARSH &
PARSONS**