

HUNT FRAME

ESTATE AGENTS

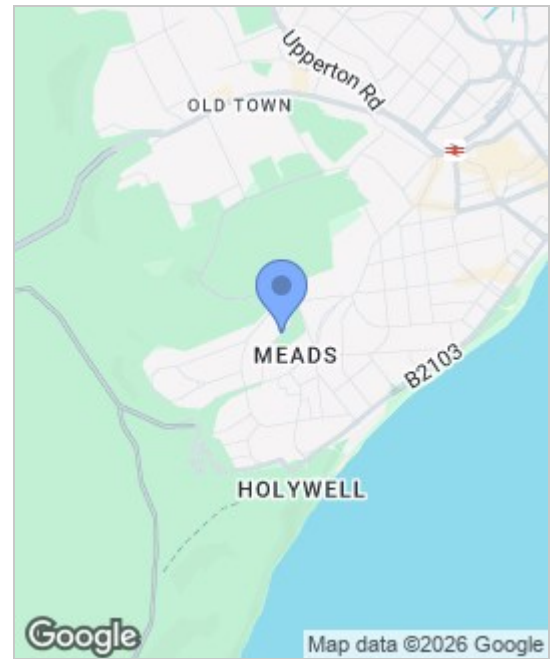


Ravelston Grange 10 Denton Road

Meads, Eastbourne, BN20 7SU

£1,350 Per Month



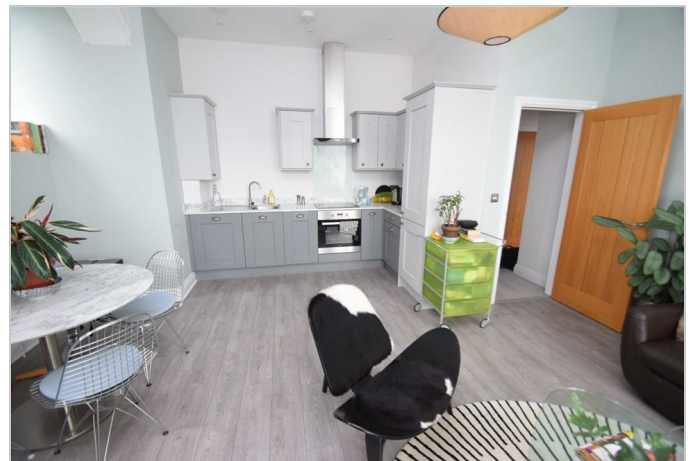


Energy Efficiency Rating		Environmental Impact (CO ₂) Rating	
Current	Potential	Current	Potential
Very energy efficient - lower running costs		Very environmentally friendly - lower CO ₂ emissions	
(92 plus) A		(92 plus) A	
(81-91) B		(81-91) B	
(69-80) C		(69-80) C	
(55-68) D		(55-68) D	
(39-54) E		(39-54) E	
(21-38) F		(21-38) F	
(1-20) G		(1-20) G	
Not energy efficient - higher running costs		Not environmentally friendly - higher CO ₂ emissions	
73	73		
England & Wales		England & Wales	
EU Directive 2002/91/EC		EU Directive 2002/91/EC	

Viewing

Please contact us on 01323 737373 if you wish to arrange a viewing appointment for this property or require further information.

- LUXURY DEVELOPMENT
- GROUND FLOOR
- MASTER BEDROOM WITH EN-SUITE
- ALLOCATED PARKING SPACE
- **ZERO DEPOSIT OPTION AVAILABLE**
- **VIRTUAL TOUR**
- AVAILABLE NOW
- OPEN PLAN LIVING ROOM/KITCHEN
- LUXURY BATHROOM
- TWO BEDROOMS
- TO APPLY: PLEASE CLICK 'CONTACT AGENT OR FURTHER DETAILS'



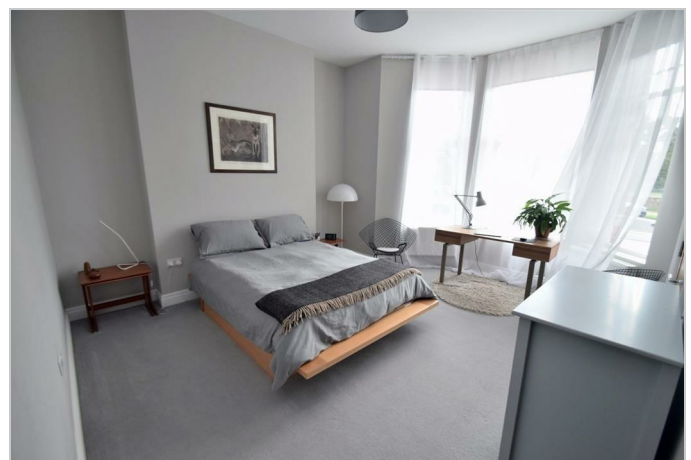
TO APPLY: PLEASE CLICK 'CONTACT AGENT OR FURTHER DETAILS'.

A RECENTLY CONVERTED, TWO BEDROOM luxury ground floor flat situated within the desirable Meads area of Eastbourne. Finished to a very high standard the accommodation comprises: Open plan Living room/kitchen, master bedroom with luxury En-suite shower room, second bedroom and bathroom. Also benefitting from an ALLOCATED PARKING SPACE. Please apply by email.

Holding Deposit : £311.53

Security Deposit : £1,557.69

Council tax band : B.



These particulars, whilst believed to be accurate are set out as a general outline only for guidance and do not constitute any part of an offer or contract. Intending purchasers should not rely on them as statements of representation of fact, but must satisfy themselves by inspection or otherwise as to their accuracy. No person in this firm's employment has the authority to make or give any representation or warranty in respect of the property.