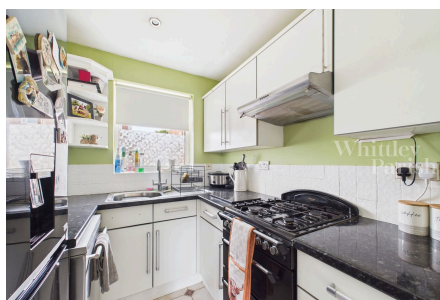


Hunt Close, Harleston

Offers Over £185,000

🛏 2 🚿 1 🚗 1



The property comprises a two bedroom semi-detached house built of traditional brick and block cavity wall construction under an interlocking tiled roof with upvc windows and doors, whilst being heated by replaced electric storage heaters. Offering bright and spacious accommodation in the region of 550 sq ft. Being set back from the road and approached via a hardstanding driveway giving off-road parking for two vehicles. The main gardens are found to the rear being predominantly laid to lawn with patio area giving space for alfresco dining, timber shed and all being enclosed by panel fencing.

Key Features

- Cul de Sac location
- Off-road parking
- Walking distance to amenities
- Council Tax Band B
- Electric heating
- Replaced bathroom
- Enclosed garden
- Freehold
- EPC Rating E
- Mains drainage

