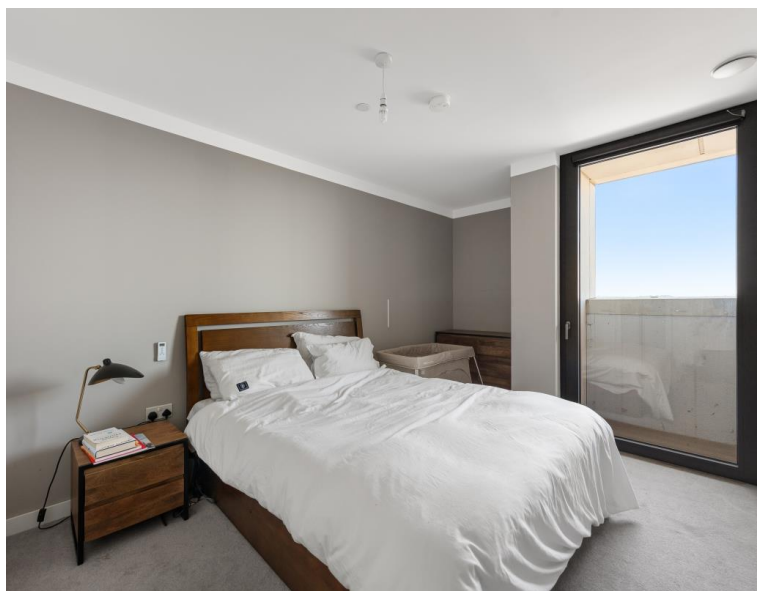




3 City North Place, London N4

Offers In Excess Of £750,000 Leasehold







Description

Positioned within the distinguished City North development in Finsbury Park, this exceptional apartment presents an outstanding opportunity for discerning buyers seeking contemporary living in one of North London's most vibrant neighbourhoods. The development's striking architectural presence and comprehensive amenities establish it as a landmark address in the area.

The apartment showcases a beautifully appointed open-plan living space, where floor-to-ceiling windows flood the interior with natural light and frame sweeping views across the cityscape. The modern kitchen seamlessly integrates with the reception area, creating an ideal environment for both everyday living and entertaining. Two private balconies extend the living space outdoors, providing peaceful retreats where residents can enjoy the elevated aspect and panoramic vistas from different perspectives. The generously proportioned bedrooms offer contemporary styling and excellent storage, whilst the well-appointed bathrooms ensure comfort and convenience. Throughout, high-quality finishes and thoughtful design details create an atmosphere of refined modern living across 872 square feet.

Residents of City North benefit from round-the-clock concierge

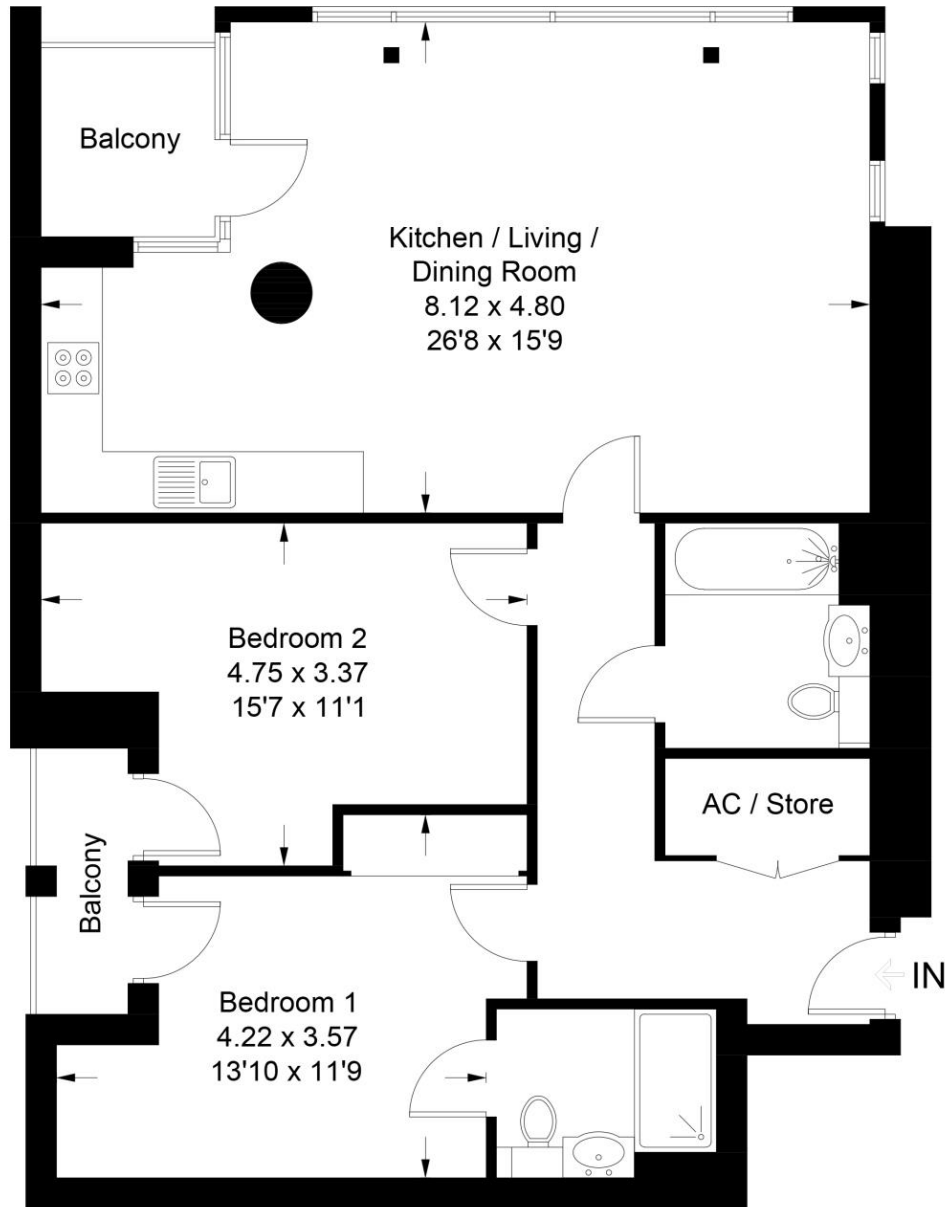
- Finsbury Park location
- Two private balconies
- 24-hour concierge service
- Floor-to-ceiling windows
- Open-plan living space
- Premium City North development
- Moments from station
- 872 sq ft

Floorplan

872 sq ft | 81 sq m

City North East, N4

Approximate Gross Internal Area = 81 sq m / 872 sq ft



Sixteenth Floor

Illustration for identification purposes only, measurements are approximate, not to scale. Fourlabs.co © (ID1305635)

Finsbury Park
Woodberry Park,
London N4 2BL
0203 147 1964
lettingsfinsburypark@eu.jll.co

Urban living, your way.

jll.co.uk/residential

© 2019 Jones Lang LaSalle IP, Inc. All rights reserved. All information contained herein is from sources deemed reliable; however, no representation or warranty is made to the accuracy thereof.

