



## LEWISHAM WAY, SE14

£300,000

One bedroom apartment  
Sole use of rear garden  
Eat-in kitchen  
Long leasehold  
Located for overground  
Energy rating: c



# ABOUT THE PROPERTY

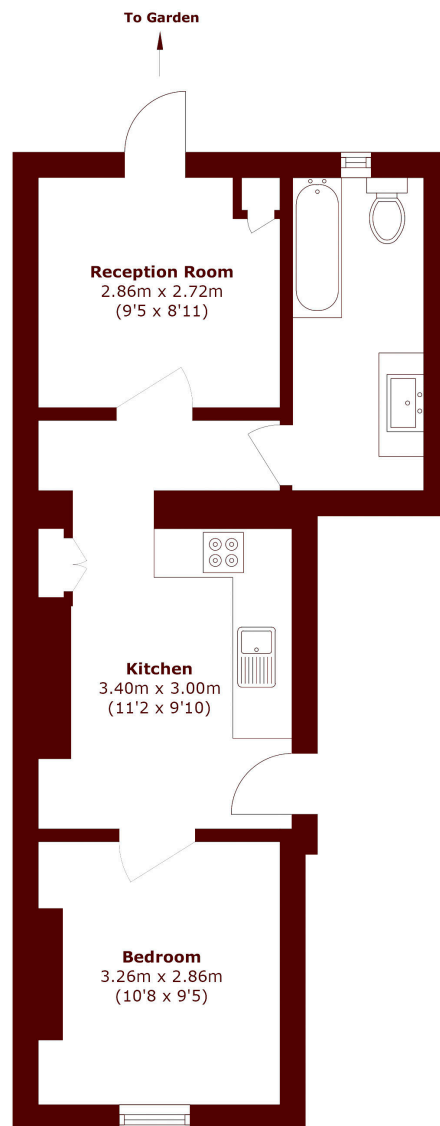
Offers in Excess of £300,000. Ground floor apartment with sole use of a stylish low maintenance South facing garden.

This unique home has undergone a fabulous transformation in the 8 years of current ownership and includes a well-planned 'eat-in' kitchen and large luxury bathroom.

New Cross Overground Station is found about 500 metres away, with Deptford Bridge DLR not much farther. New Cross and Deptford are both vibrant social hubs with a great choice of well regarded bars, pubs and restaurants to choose from.



# STEP INSIDE LEWISHAM WAY



Total area (approx.): 38.1 sq. m (410.1 sq. ft)

**Brockley**  
020 8629 8164

Energy Rating: C We aim to make our particulars both accurate and reliable. However, they are not guaranteed; nor do they form part of an offer or contract. If you require clarification on any points then please contact us, especially if you're traveling some distance to view. Please note that appliances and heating systems have not been tested and therefore no warranties can be given as to their good working order

**MARSH &  
PARSONS**