



Weymouth Street, Warminster

£120,000



Key Features

- End Of Chain
- Open plan Kitchen / Living
- Separate Toilet
- Shower Room
- Double Bedroom
- EPC rating D
- Leasehold





This well-presented flat in Warminster offers an excellent opportunity for first-time buyers and investors alike.

The property is in good condition and features a practical open-plan layout, with the reception area flowing seamlessly into the kitchen, which includes built-in pantry storage for added convenience.

The double bedroom benefits from built-in wardrobes, maximising available floor space, and is further complemented by a separate storage cupboard.

The shower room is fitted with an enclosed shower and a heated towel rail. In addition, a separate WC with a toilet and wash basin enhances everyday functionality.

The property has an EPC rating of D and falls within Council Tax Band A.

Warminster town centre is easily accessible, offering a range of local amenities, including shops, cafes, and services. The area is also well served by schools catering to various age groups.

Nearby parks and green spaces provide opportunities for outdoor activities, with walking and cycling routes extending into the surrounding countryside.

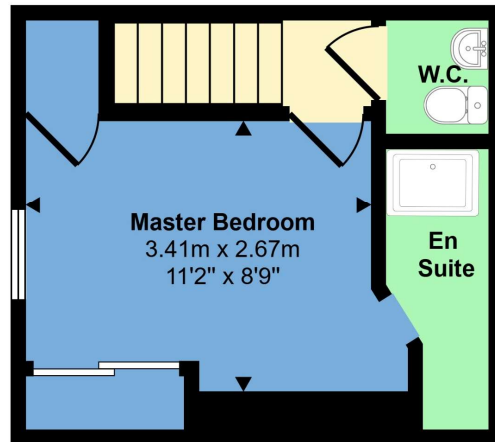
Transport links are a notable advantage, with Warminster railway station offering regular services to Bath, Bristol, and Salisbury, as well as onward connections to London. Typical journey times are approximately 30 minutes to Bath, 45-50 minutes to Bristol Temple Meads, and around 25 minutes to Salisbury. Local bus routes further enhance connectivity to neighbouring towns and villages.

Overall, this property combines a practical layout with a convenient location, making it a strong choice for a range of buyers.

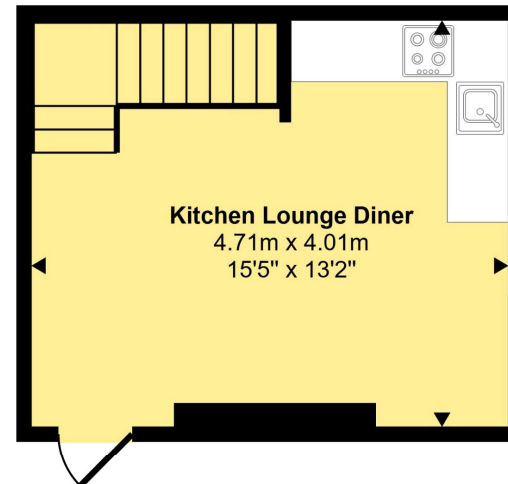




Approx Gross Internal Area
38 sq m / 404 sq ft



Lower Ground Floor
Approx 19 sq m / 200 sq ft



Ground Floor
Approx 19 sq m / 203 sq ft

This floorplan is only for illustrative purposes and is not to scale. Measurements of rooms, doors, windows, and any items are approximate and no responsibility is taken for any error, omission or mis-statement. Icons of items such as bathroom suites are representations only and may not look like the real items. Made with Made Snappy 360.

