



*jordan fishwick*

**WEST DIDSBURY**  
Everett Court



## Everett Court, West Didsbury, M20 3DT

£180,000



### The Property

A light and spacious one bedroom ground floor apartment suitable for a number of buyers including first time buyers or buy to let landlords, positioned in a purpose built development, set within a convenient location which gives easy access to Withington Village and Burton Road with its array of bars, restaurants and tram stop. (412 sq ft) The property comprises:- Entrance hall with newly fitted front door with built in storage cupboard, open plan living area with large picture window overlooking well tended communal gardens and modernised kitchen area with integrated appliances, master bedroom with fitted wardrobes plus a fitted modern bathroom with over bath shower. Gas central heating, uPVC double glazing and private parking spaces complete the impressive specification. No chain. Please note we have been advised that the communal entrance hall is due to be refurbishment this year. No chain.

### Directions

M20 3DT



- One bedroom ground floor Apartment
- Presented to the highest standard
- Refitted kitchen & bathroom
- Walking distance to Metro Stations
- Gas central heating
- No chain
- Private residents parking

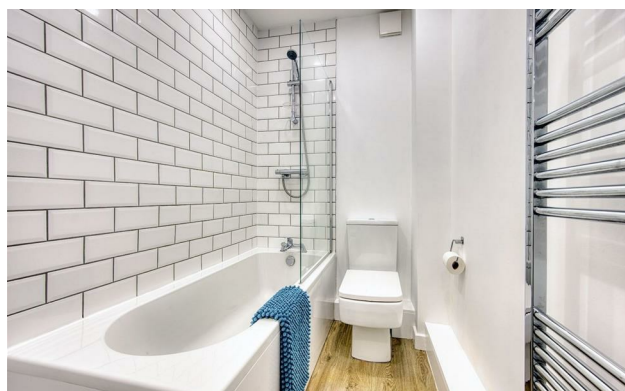
Postcode - M20 3DT

EPC Rating - C

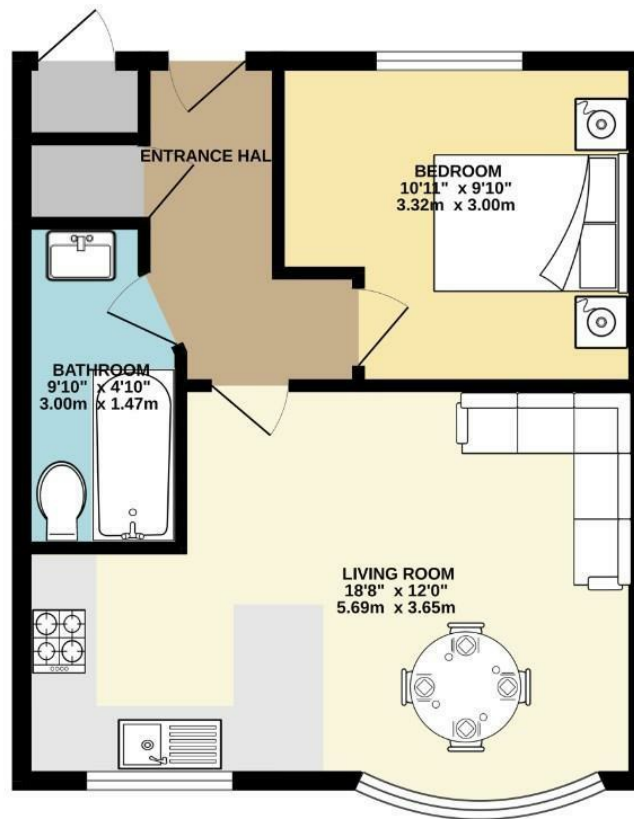
Floor Area - 412.00 sq ft

Local Authority - Manchester City Council

Council Tax - A



GROUND FLOOR  
412 sq.ft. (38.2 sq.m.) approx.



TOTAL FLOOR AREA: 412 sq.ft. (38.2 sq.m.) approx.  
Measurements are approximate. Not to scale. Illustrative purposes only.  
Made with MicroPix ©2025.



These particulars are believed to be accurate but they are not guaranteed and do not form a contract. Neither Jordan Fishwick nor the vendor or lessor accept any responsibility in respect of these particulars, which are not intended to be statements or representations of fact and any intending purchaser or lessee must satisfy himself by inspection or otherwise as to the correctness of each of the statements contained in these particulars. Any floorplans on this brochure are for illustrative purposes only and are not necessarily to scale.

Offices also at: Wilmslow, Macclesfield, Hale, Sale, Chorlton, Glossop, Manchester & Salford

757-759 Wilmslow Road, Didsbury Village, Manchester

0161 445 4480

didsbury@jordanfishwick.co.uk  
www.jordanfishwick.co.uk