




Clewer Fields
£1,750 Per Month



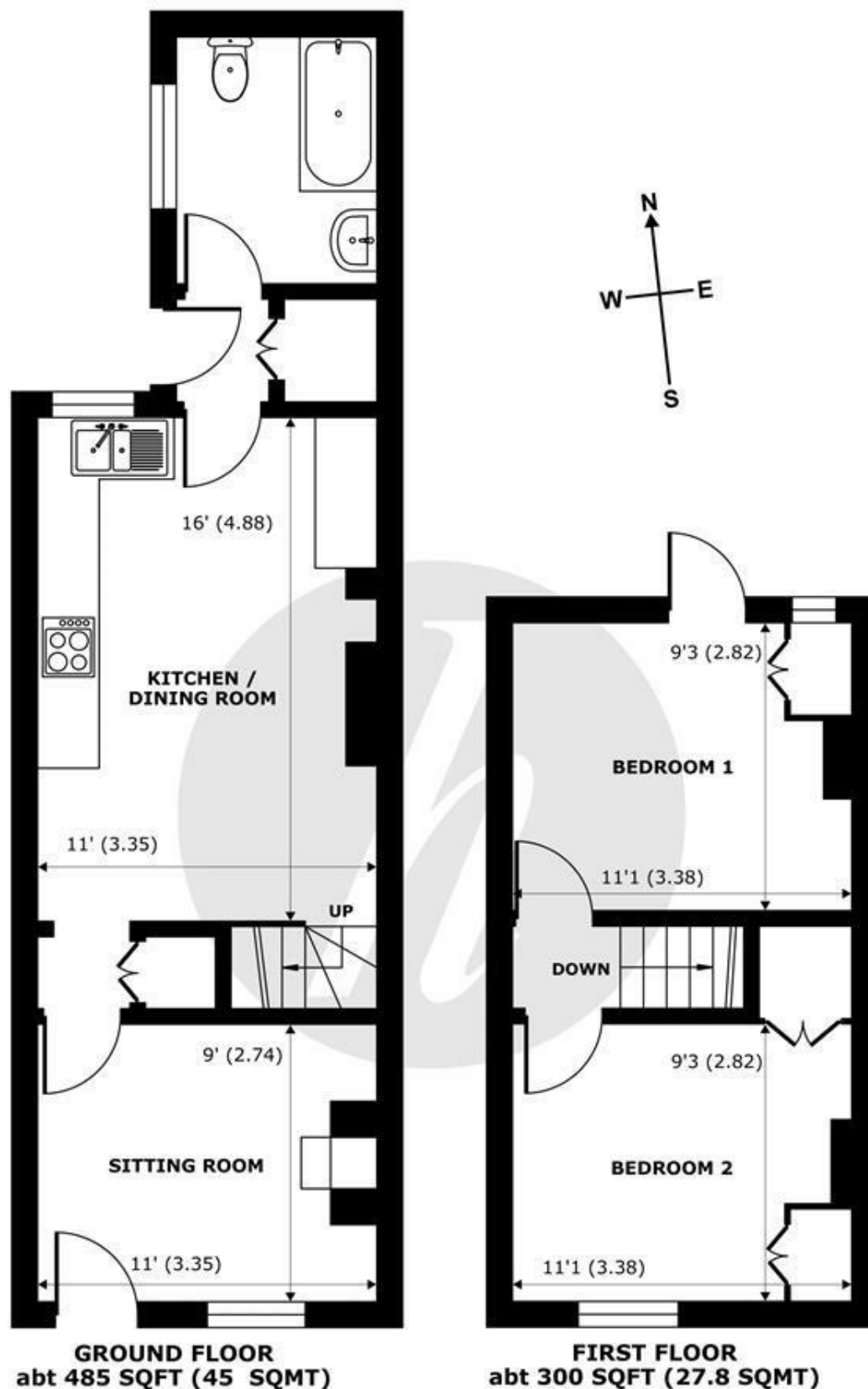


A beautifully presented two bedroom Cottage in the heart of Windsor. Boasting two bedrooms, separate living room, downstairs bathroom and private rear garden. Situated in a quiet location and walking distance to Windsor Town Centre.

Energy Efficiency Rating		
	Current	Potential
Very energy efficient - lower running costs		
(92 plus) A		
(81-91) B		
(69-80) C		
(55-68) D		
(39-54) E		
(21-38) F		
(1-20) G		
Not energy efficient - higher running costs		
England & Wales		EU Directive 2002/91/EC 

Features

- Two Bedroom Cottage
- Private rear garden
- Master bedroom with private balcony
- Downstairs Bathroom
- EPC rating D
- Beautifully presented throughout
- Parking for one car
- Walking distance to Windsor Town Centre
- Available end of April



Clewer Fields, Windsor, SL4

Approximate Internal Area = 638 sq ft / 59.2 sq m

Approximate External Area = 785 sq ft / 72.9 sq m

For identification only - Not to scale



Certified
Property
Measurer

Floor plan produced in accordance with RICS Property Measurement Standards incorporating International Property Measurement Standards (IPMS2 Residential). © nichecom 2024. Produced for Hardings. REF: 1131292





11 High Street, Windsor, Berkshire, SL4 1LD,
T: 01753 833 118 | E: info@hardings.co.uk
www.hardings.co.uk

