



Bayswater Road, W2

£30,329 Per week

Dexters



Bayswater Road, W2

A stunning three bedroom, three bathroom apartment located in the highly sought after Park Modern Development. The open living space has large windows that offer expansive views and flood the room with natural light. The high-end kitchen is equipped with integrated appliances, a breakfast bar and plenty of storage space.

The Park Modern Development offers residents a high level of security, including 24-hour concierge services and secure entry, with beautifully designed communal spaces, gym, treatment rooms and swimming pool and spa.

Situated in the heart of W2, this apartment is just moments from Hyde Park, with easy access to public transport, including Lancaster Gate and Paddington stations. Residents enjoy the vibrant surroundings with a variety of high-end restaurants, cafes, and shops nearby. The property is also well-positioned for quick access to the West End and other parts of Central London.

Features

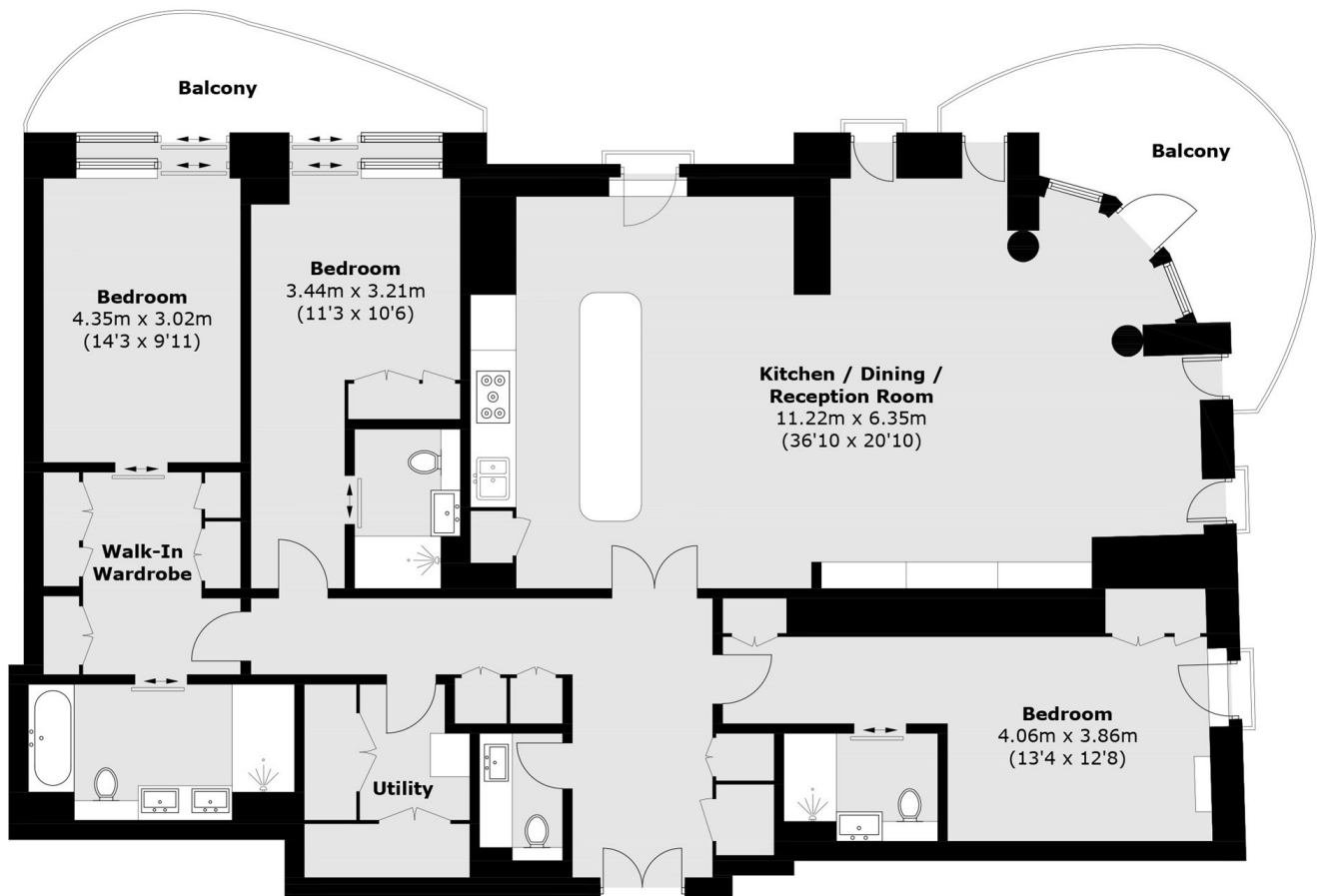
- Three bedrooms
- Furnished
- 24- hour concierge
- Gym
- Swimming Pool
- Terrace







Bayswater Road, London, W2



Total area (approx.): 184.0 sq. m (1,980.6 sq. ft)
Balcony: 22.7 sq. m (244.3 sq. ft)