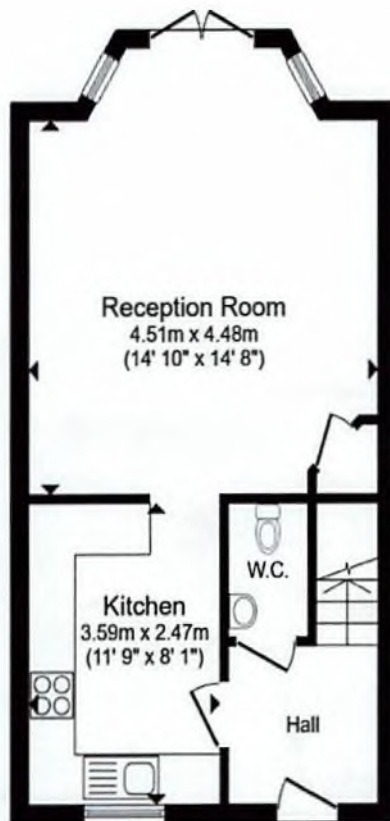
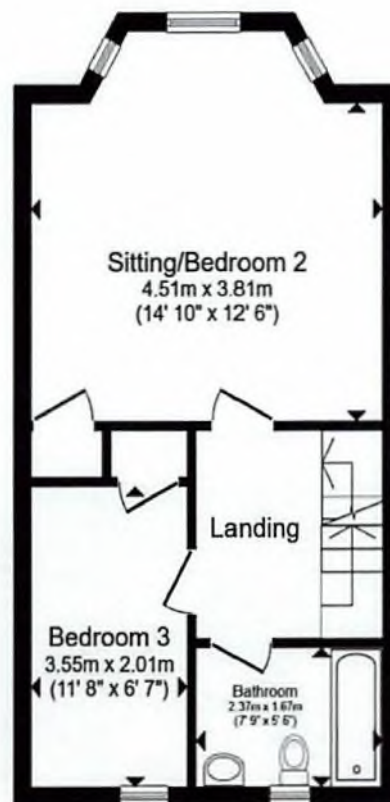




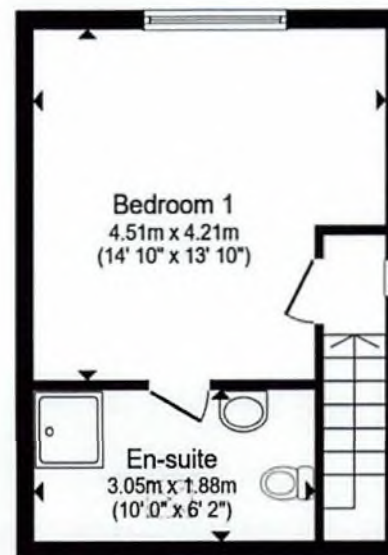
Lime Park Mews Dorchester Road, Weymouth DT3 5LG



Ground Floor



First Floor



Second Floor

Kitchen

Sitting Room

Family Bathroom

Master Bedroom

En Suite

Bedroom Two

Bedroom Three

Downstairs Cloakroom

External

Total floor area 105.6 m² (1,137 sq.ft.) approx

This floor plan is for illustrative purposes only. It is not drawn to scale. Any measurements, floor areas (including any total floor area), openings and orientation are approximate. No details are guaranteed, they cannot be relied upon for any purpose and they do not form part of any agreement. No liability is taken for any error, omission or misstatement. A party must rely upon its own inspection(s). Powered by www.propertybox.io

