



Brookbank Avenue, W7

£825,000

A stunning, fully extended four bedroom, three bathroom terraced family home boasting a large, secluded rear garden. This impressive property offers over 1,400 sq ft of versatile accommodation arranged across three well-proportioned floors.

This attractive property further benefits from an outbuilding with a bathroom in the rear garden and convenient off-street parking.

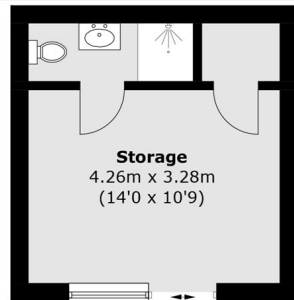


The ground floor features a spacious front reception room, a guest WC and an extended kitchen/diner opening onto a low-maintenance, sun-filled garden. The first floor comprises two double bedrooms, a single bedroom and a family bathroom. The loft has been converted to provide an additional double bedroom with an en suite.

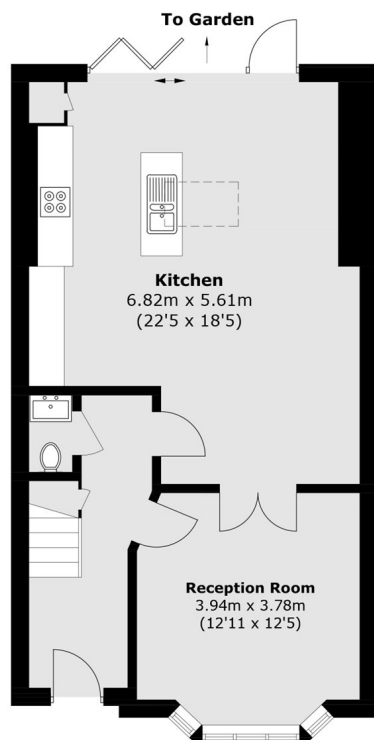
Located close to local amenities and bus routes to Ealing and Greenford. The property is also within walking distance of Hanwell (Elizabeth line) station and a variety of good local schools including Mayfield primary.

- Four Bedrooms • Converted Loft • Excellent condition •
 - Outbuilding With Shower Room • Off-Street Parking • Private Garden •
-





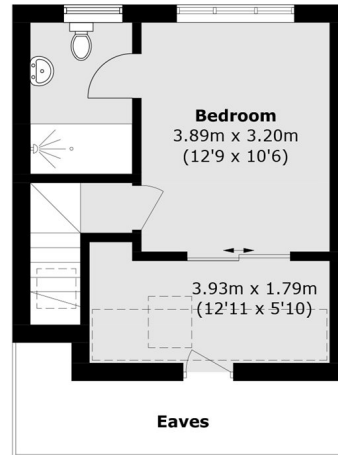
(Not Shown In Actual
Location / Orientation)



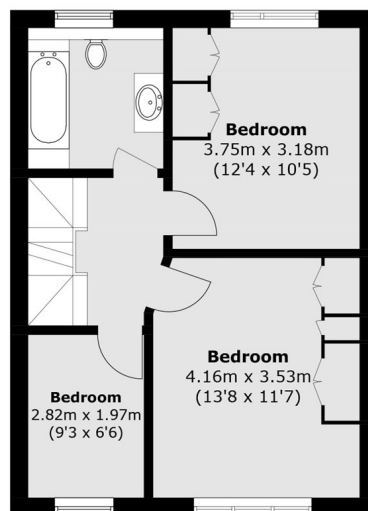
Ground Floor

Total area (approx.): 132.6 sq. m (1,427.3 sq. ft)
(Excluding Eaves)

Outbuilding: 18.9 sq. m (203.4 sq. ft)



Second Floor



First Floor

Robertson Smith & Kempson Hanwell Sales
69 Greenford Avenue,
London, W7 1LL
020 8566 2339
hanwellsales@robertsonsmithandkempson.co.uk

Energy Rating: C. We aim to make our particulars both accurate and reliable. However they are not guaranteed; nor do they form part of an offer or contract. If you require clarification on any points then please contact us, especially if you're traveling some distance to view. Please note that appliances and heating systems have not been tested and therefore no warranties can be given as to their good working order.