



## Kensington High Street, W8

£2,700 Per calendar month

In the heart of Kensington, this one bedroom flat is on the top floor of a mansion block. It has recently been refurbished to a high specification and comes with a day time porter.

Phillimore Court is moments from the shops of Kensington High Street and the green open spaces of Holland Park and Kensington Gardens.

### Features

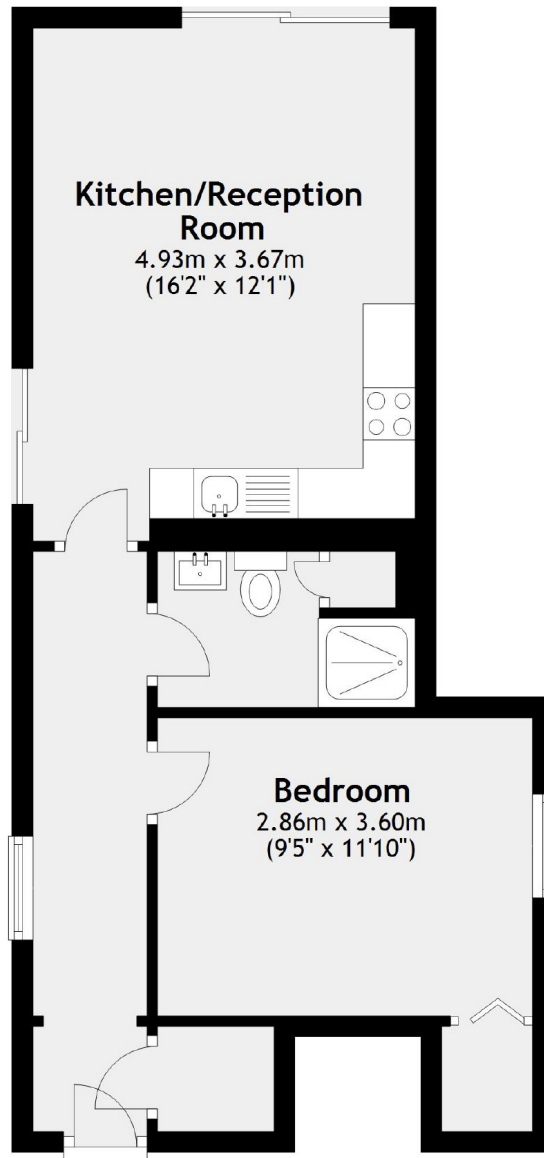
- One Bedroom
- Modern Kitchen and Bathroom
- Recently Refurbished
- Top Floor
- Lift Access
- Portered Mansion Block



Kensington High Street, W8



Kensington High Street,  
London, W8



Total area: approx. 41.6 sq. metres (447.7 sq. feet)