

## Elizabeth Mews, NW3

£495 Per week

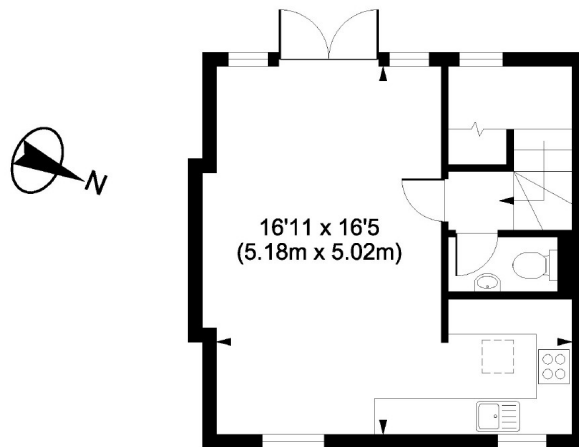
**\*VIDEO VIEWING AVAILABLE\*** An immaculately presented two double bedroom house on this private cobbled Mews. The house is arranged over two floors and has a balcony.

Moments from the trendy cafes & shops of Englands Lane as well as The Washington pub known as a bit of a celebrity hangout. Belsize Park and Swiss Cottage tubes are also close by.

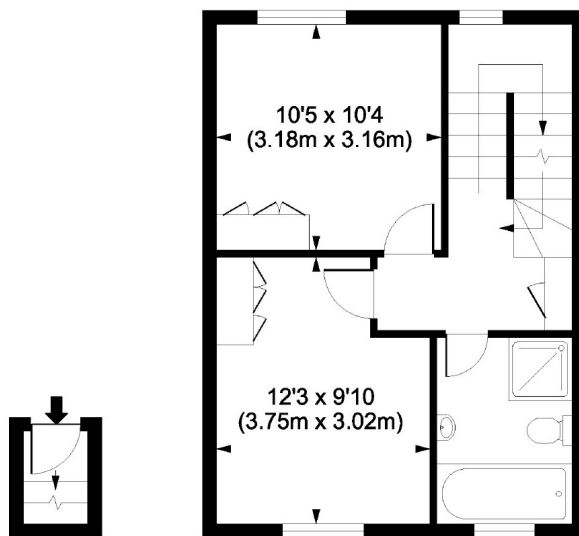
### Features

- Two Bedrooms
- Excellent Condition
- Wood Floors
- Modern Kitchen
- Balcony
- Mews House

## Elizabeth Mews, London, NW3



SECOND FLOOR



GROUND FLOOR

FIRST FLOOR

Elizabeth Mews, London, NW3  
Gross Internal Area 678 sq ft/63 sq metres

Whilst every attempt has been made to ensure the accuracy of the floorplan shown, all measurements, positioning fixtures, fittings and any other data shown are an approximate interpretation for illustrative purposes only and are not to scale. No responsibility is taken for any error, omission, miss-statement or use of data shown.

### Contact

To arrange a viewing call our office on the number below or visit our website.



Energy Rating: D. We aim to make our particulars both accurate and reliable. However they are not guaranteed; nor do they form part of an offer or contract. If you require clarification on any points then please contact us, especially if you're traveling some distance to view. Please note that appliances and heating systems have not been tested and therefore no warranties can be given as to their good working order.