



## PORTAL WAY, W3

£2,250 pcm

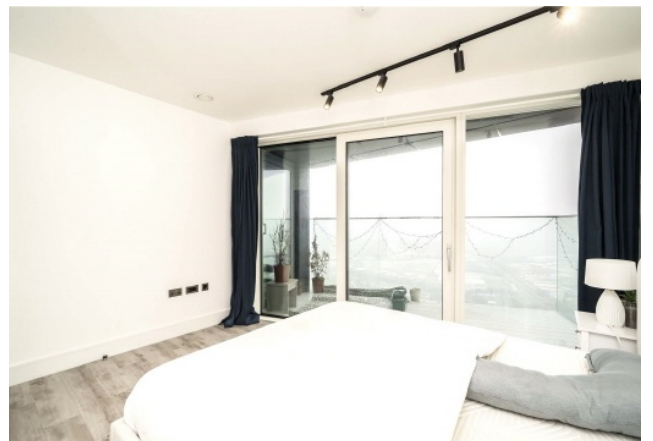
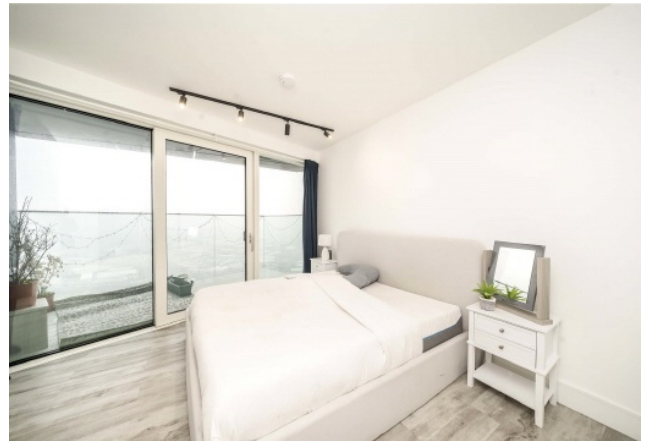
This stunning top-floor penthouse offers 566 sq/ft of modern living space, featuring a private balcony and a pet-friendly policy. Residents enjoy a 24-hour concierge service and a world-class gym.

- Top Floor Penthouse
- 24-Hour Concierge Service
- North Acton

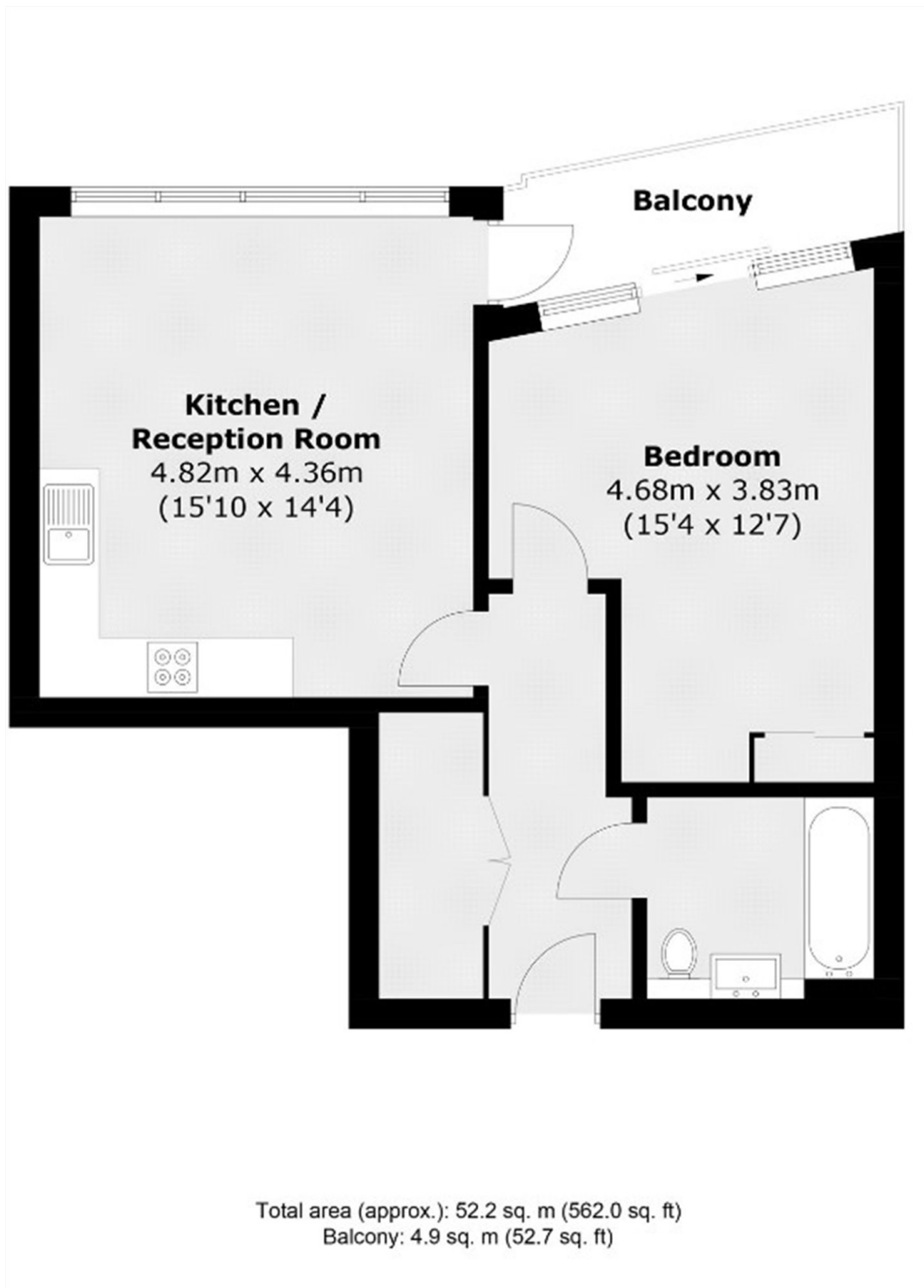


## ABOUT THE HOME

Ideally located two minutes from North Acton Station and near Acton Main Line. Essential amenities, including Sainsbury's, Tesco, and local restaurants, are conveniently situated right on your vibrant doorstep.







**LiFE RESIDENTIAL**

203 Trentham Court, Victoria  
Road, London, W3 6BT  
Sales: 020 3668 1112  
Lettings: 020 3668 1111

Energy Rating: B. We aim to make our particulars both accurate and reliable. However they are not guaranteed; nor do they form part of an offer or contract. If you require clarification on any points then please contact us, especially if you're traveling some distance to view. Please note that appliances and heating systems have not been tested and therefore no warranties can be given as to their good working order.