





Guide Price
£274,000

Situated in a quiet cul-de-sac this well presented ground floor two bedroom maisonette, with private garden, is welcomed to the market offering a spacious lounge/dining room, kitchen and bathroom. With communal parking and easy access to the local amenities of Tring high street and scenic walks.

Property Description

ENTRANCE

Door to:

ENTRANCE HALL

Radiator, doors to all rooms.

LOUNGE

Double glazed double doors to garden. Radiator.

KITCHEN

Double glazed window to side aspect. Fitted with a range of wall-mounted and floor standing units with quartz work surface over, one and a half bowl stainless steel sink with mixer tap and garbage disposal, built- in oven and a combination oven/microwave, with warming drawer, integrated dishwasher, plumbing for washing machine, space for fridge freezer, concealed wall-mounted gas boiler, plinth heater.

BEDROOM ONE

Double glazed window to side aspect. Radiator, built-in wardrobes.

BEDROOM TWO

Double glazed window to side aspect. Radiator, built-in wardrobes.

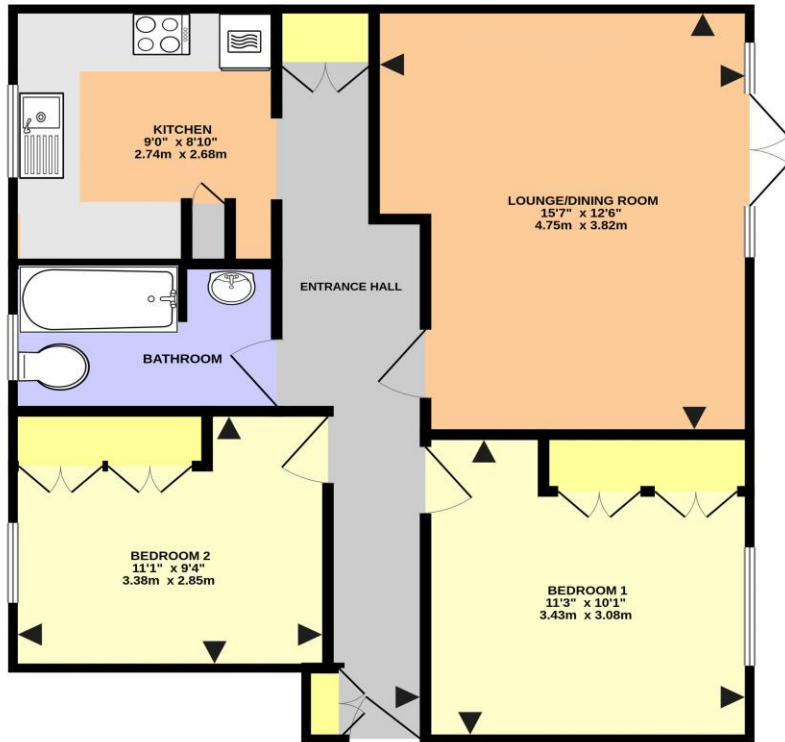
BATHROOM

Double glazed frosted window to front aspect. Refitted panelled bath with shower over, low level WC, wash hand basin, heated towel rail.

OUTSIDE

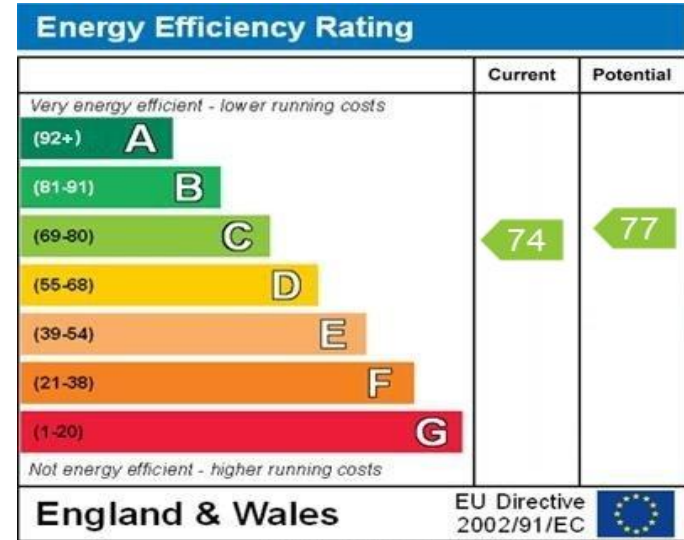
REAR GARDEN

Mainly laid to lawn with decked area, gated side access, flower and shrub beds, enclosed by panel fencing.



SUTTON CLOSE, TRING HP23 5HD (PRODUCED FOR MICHAEL ANTHONY)

TOTAL FLOOR AREA : 642 sq.ft. (59.6 sq.m.) approx.
No accuracy to this image, text or measurements is guaranteed
Made with Metropix ©2025



WWW.EPC4U.COM

MONEY LAUNDERING REGULATIONS 2017 intending purchasers will be asked to produce identification and proof of financial status when an offer is received. We would ask for your co-operation in order that there will be no delay in agreeing the sale.

THE CONSUMER PROTECTION REGULATIONS 2008 The Agent has not tested any apparatus, equipment, fixtures and fittings or services and so cannot verify that they are in working order or fit for the purpose. A Buyer is advised to obtain verification from their Solicitor or Surveyor. References to the Tenure of a Property are based on information supplied by the Seller. The Agent has not had sight of the title documents. A Buyer is advised to obtain verification from their Solicitor. You are advised to check the availability of this property before travelling any distance to view. We have taken every precaution to ensure that these details are accurate and not misleading. If there is any point which is of particular importance to you, please contact us and we will provide any information you require. This is advisable, particularly if you intend to travel some distance to view the property. The mention of any appliances and services within these details does not imply that they are in full and efficient working order. These particulars are in draft form awaiting Vendors confirmation of their accuracy. These details must therefore be taken as a guide only and approved details should be requested from the agents

79 High Street Tring Herts HP23 4AB
01442 891177 | tring@maea.co.uk