



## Ashburnham Road, NW10

£625,000

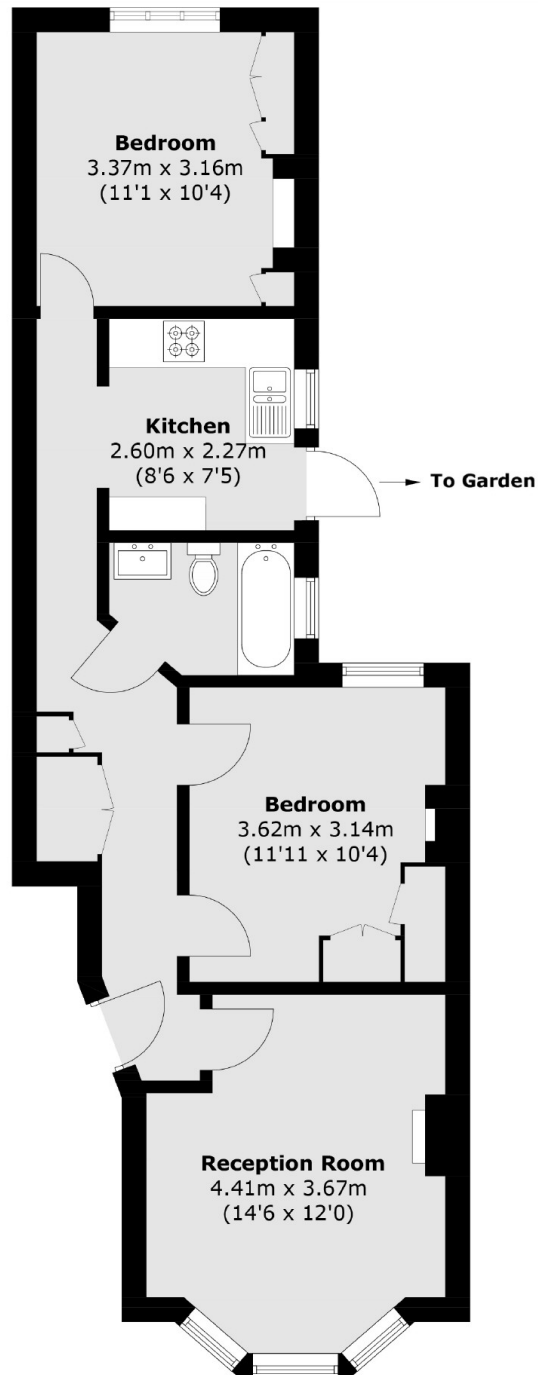
Beautifully presented with character throughout, this two-bedroom garden flat is located in the heart of Kensal Rise. The flat features two spacious double bedrooms with built-in storage, a bright and inviting reception room with a bay window, and a well-appointed kitchen offering ample storage and direct access to a private garden.

Ashburnham Road is just moments away from the vibrant Chamberlayne Road, home to an array of shops, cafés, and eateries. The area also benefits from excellent transport links, including Kensal Rise (Overground) and Kensal Green (Bakerloo Line & Overground) stations, ensuring easy access across London.

### Features

- Two Bedrooms
- Ground Floor
- Private Garden
- Close To Transport
- Chain Free
- Good Condition

# Ashburnham Road, London, NW10



Total area (approx.): 58.6 sq. m (630.8 sq. ft)