

Rolfe East



Waxlow Way, UB5

£267,500

- Grand Union Village
- Over 100 Year Lease
- Allocated Parking Space
- Good Amenities Nearby
- Marina Views
- Juliette Balcony
- Lift Access
- Two Double Bedroom Apartment
- En-Suite Shower Room
- Close to King George's Field

289 Northfield Avenue, Ealing, W5 4XB
020 8579 1111

northfields@rolfe-east.com
<https://www.rolfe-east.com/>

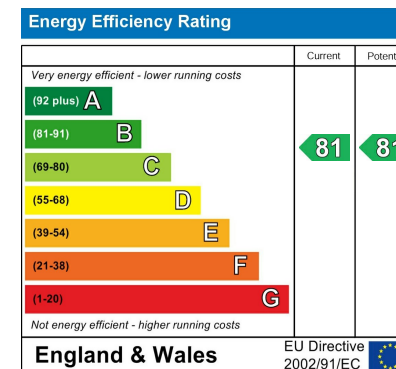
Viewings

Viewings by arrangement only.

Call 020 8579 1111 to make an appointment.

Council Tax Band

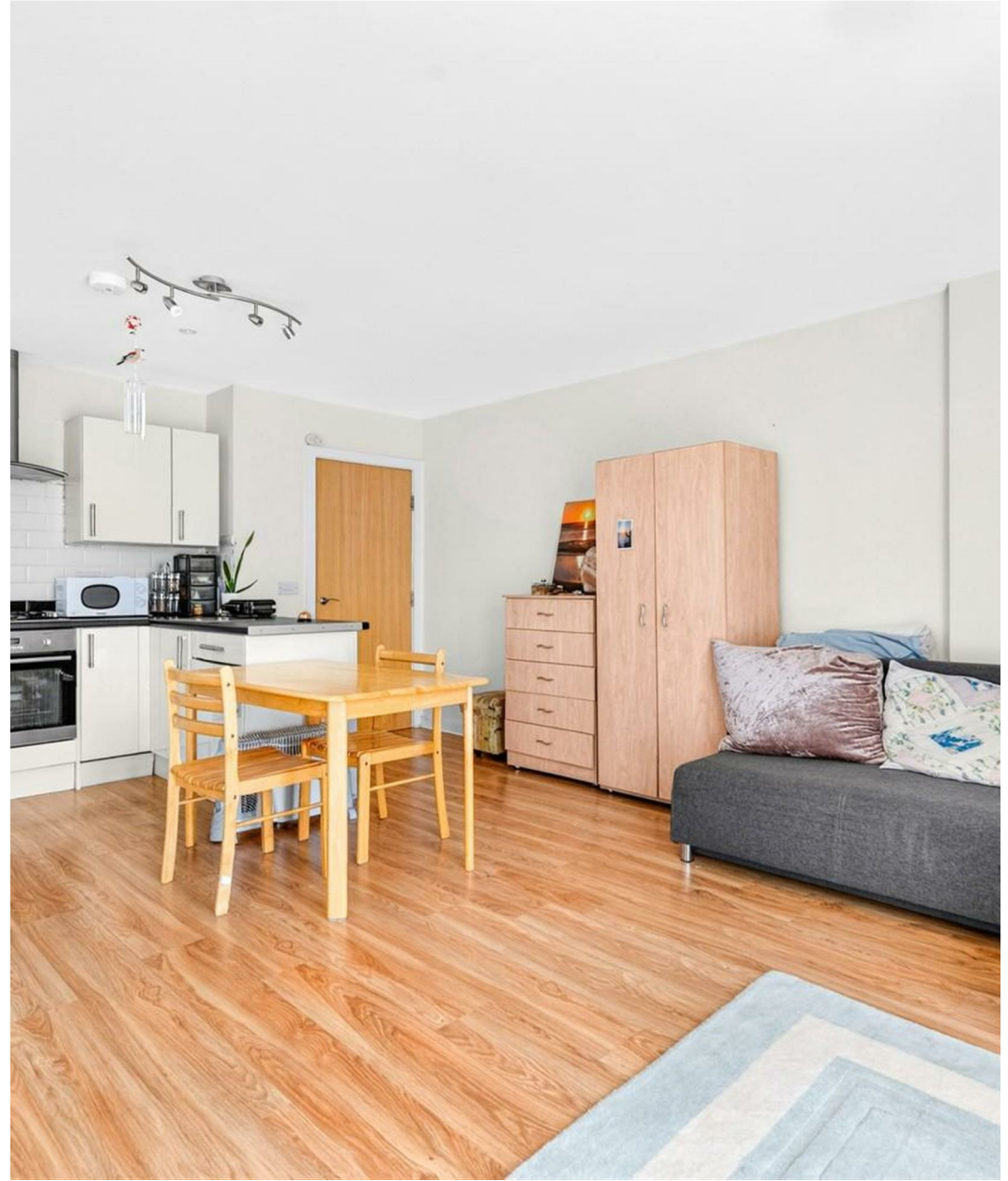
D



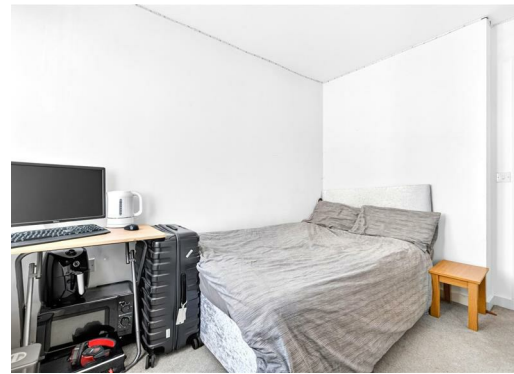
A two double bedroom flat situated in the tranquil Grand Union Village in Northolt. This modern apartment features a spacious reception room with open plan kitchen/diner, which gives it a warm and inviting atmosphere, perfect for relaxation or entertaining guests. The master bedroom has an en-suite shower room, adding a touch of luxury and privacy to your living experience. One of the standout features of this property is the stunning side views of the canal and marina, which can be enjoyed from various rooms within the flat. This picturesque setting enhances the overall appeal of the home, offering a serene backdrop to your daily life.

With over 100 years remaining on the lease, you can rest assured that this property is a sound investment. Additionally, the flat comes with allocated parking, a valuable asset in this area, ensuring that you will always have a convenient place to leave your vehicle. Importantly, this property is offered with no onward chain, allowing for a smooth and efficient purchasing process. This home would be an ideal choice for a couple, small family, or even investors seeking a rental opportunity.

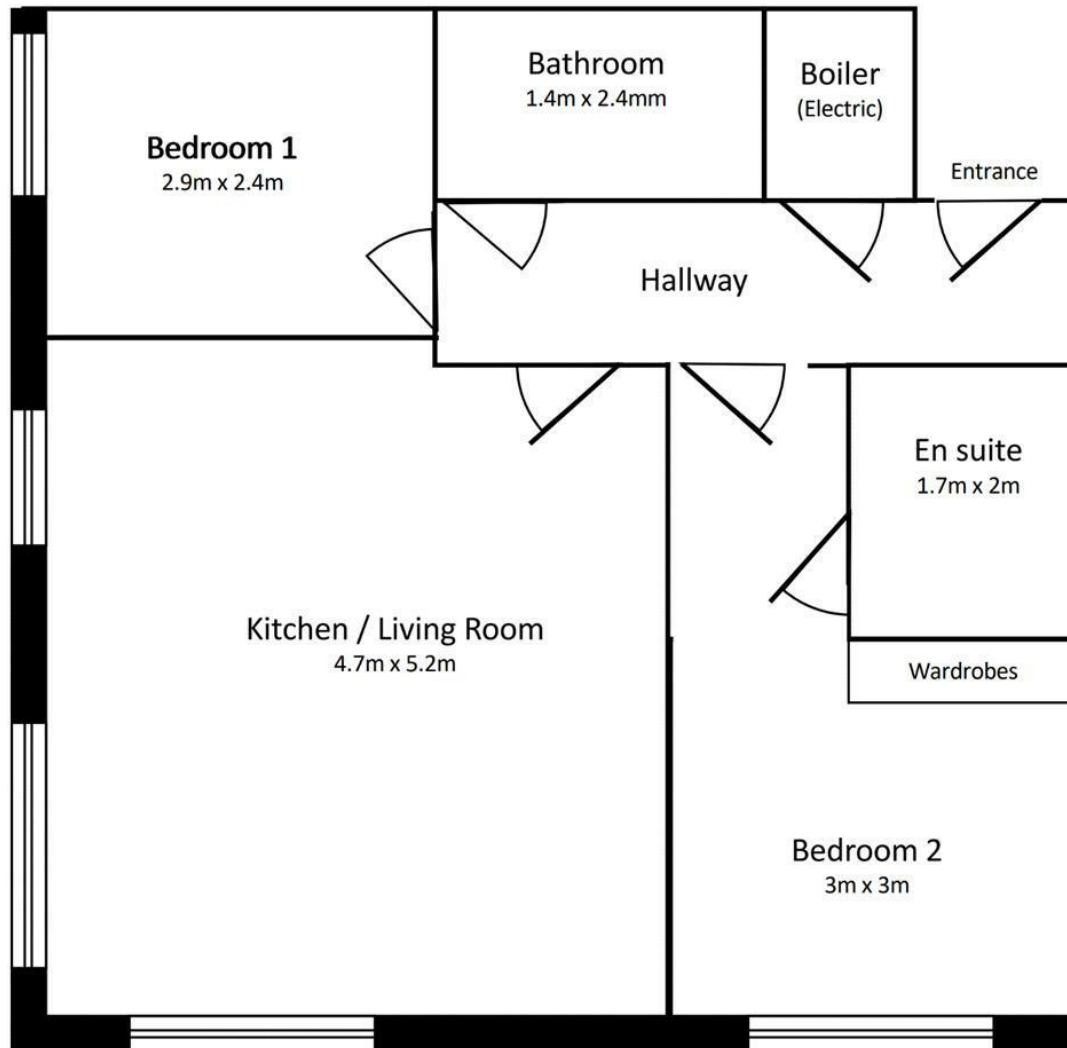
For the assurance of any prospective buyer the property has been investigated for any cladding issues and the developer has confirmed they will issue a letter of comfort for regards to any buildings works needed in requested. Please call Rolfe East on 020 8579 1111 to arrange your viewing.







Caldon House
Waxlow Way
Northolt
UB5 6FN



All measurements are approximate