

Havelock Close, W12

£2,900 Per calendar month

Situated in the heart of vibrant White City, W12, this impressive ground floor three-bedroom flat combines generous proportions with a striking industrial-inspired design, ideal for professional sharers seeking stylish London living. Tastefully decorated throughout, the property features exposed industrial elements, contemporary finishes, and a modern urban feel that creates a unique and characterful living space. All three bedrooms are exceptionally spacious, each offering ample built-in storage and plenty of natural light, making the property perfectly suited for sharers who value both comfort and practicality. The flat benefits from separate bathroom and WC facilities, adding extra convenience for busy professional households. A private front courtyard provides additional outdoor space, perfect for relaxing or entertaining. Located within easy reach of White City's excellent transport links, Westfield London, and an array of cafés, restaurants, and amenities, this property offers the perfect balance of style, space, and connectivity. Ideal for professional sharers looking for a spacious home with a distinctive industrial aesthetic in one of West London's most exciting neighbourhoods.

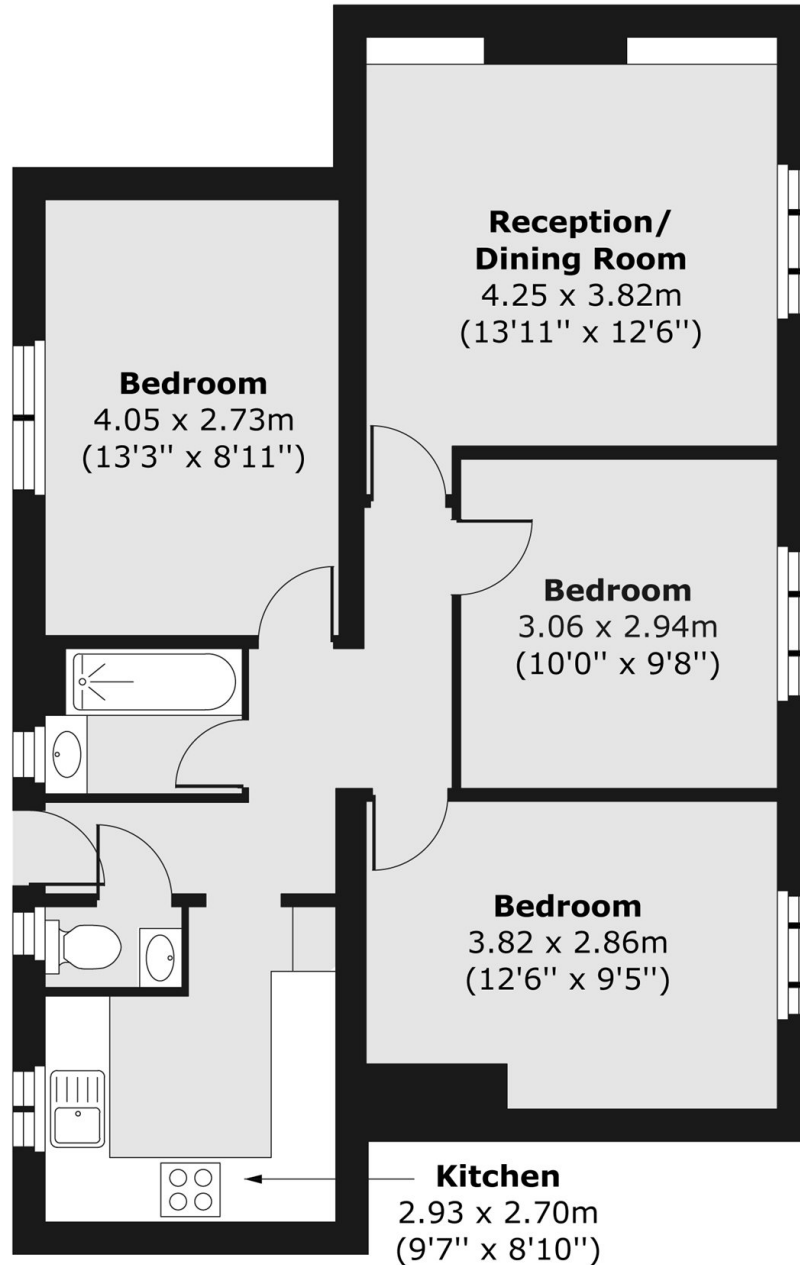
Perfectly positioned for professionals who rely on public transport, the property is just a short walk from White City and Wood Lane stations, providing quick access to the Central, Circle, and Hammersmith & City lines. Shepherd's Bush station and the Overground are also nearby, making commuting across Central London, the City, Canary Wharf, and beyond fast and convenient. Residents will benefit from excellent local bus routes, extensive cycle connections, and easy access to Westfield London's shops, gyms, cafés, restaurants, and everyday amenities all within walking distance. The location is ideal for professionals seeking a well-connected lifestyle without the need for a car.

Features

- Large Three Bedroom
- Modern Industrial Feel
- Separate living/Kitchen
- Front Courtyard
- Excellent Location
- Sharers Welcome

Havelock Close,
London, W12

Ground Floor



Total area (approx.) 65.40 sq. m (704 sq. ft)