



Alexandra Park Road, N10

£1,350 Per calendar month

A modern spacious one bedroom apartment with stunning views on one of Muswell Hill's prime residential streets. The property has been designed to perfection with spacious living in mind, separate kitchen, utility room and wood floors throughout.

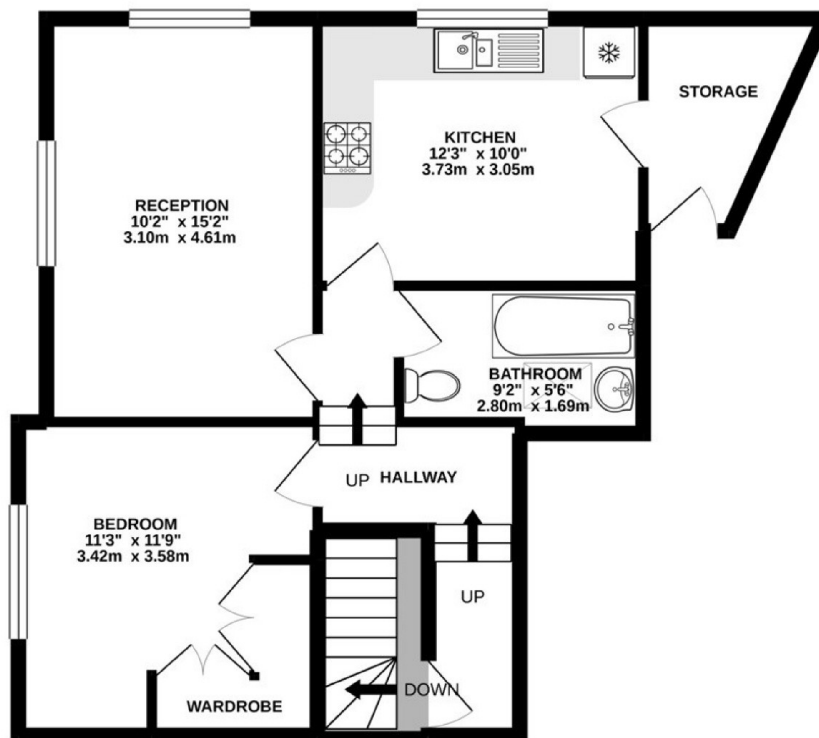
Located close to all amenities of Muswell Hill Broadway, Bounds Green Underground Station and within walking distance to the famous Alexandra Palace.

Features

- One Double Bedroom
- Second Floor
- Stunning Views
- Separate Kitchen
- Muswell Hill

Alexandra Park Road, London, N10

SECOND FLOOR
570 sq.ft. (53.0 sq.m.) approx.



TOTAL FLOOR AREA - 570 sq.ft. (53.0 sq.m.) approx.
Whilst every attempt has been made to ensure the accuracy of the floorplan contained here, measurements of doors, windows, rooms and any other items are approximate and no responsibility is taken for any error, omission or mis-statement. This plan is for illustrative purposes only and should be used as such by any prospective purchaser. The services, systems and appliances shown have not been tested and no guarantee as to their operability or efficiency can be given.
Made with Metropix ©2020



REF # 803432

Contact

To arrange a viewing call our office on the number below or visit our website.



Energy Rating: . We aim to make our particulars both accurate and reliable. However they are not guaranteed; nor do they form part of an offer or contract. If you require clarification on any points then please contact us, especially if you're traveling some distance to view. Please note that appliances and heating systems have not been tested and therefore no warranties can be given as to their good working order.