



COLSON WAY, SW16

£1,600 per month

One Bedroom
Private Roof Terrace
Bright Reception Room
Close to Tooting Common
Lift Access
EPC: C

@marshandparsons
marshandparsons.co.uk

MARSH &
PARSONS



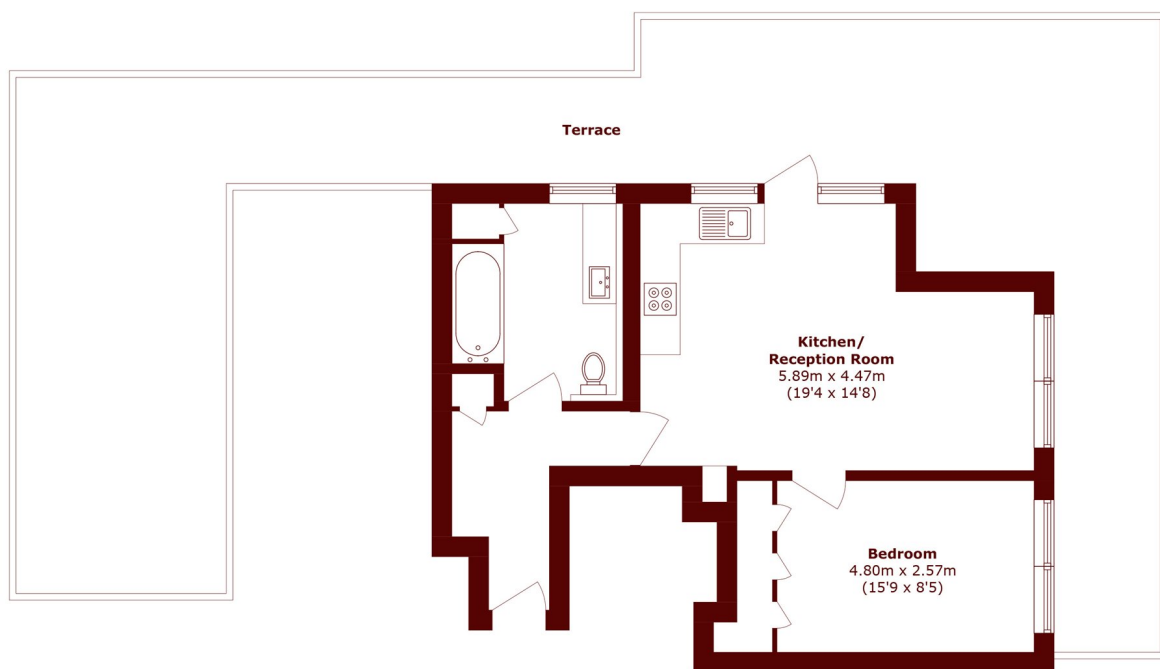
ABOUT THE PROPERTY

A spacious one bedroom apartment offering generous living space, a bright reception room and open plan kitchen. This property also comes with a private roof terrace that holds excellent views across London.

Conveniently located near Streatham railway station with direct services to London Victoria station and Clapham Junction railway station, and close to local amenities and the open green spaces of Tooting Bec Common.



STEP INSIDE COLSON WAY



Sixth Floor

Total area (approx.): 46.9 sq. m (504.8 sq. ft)
Terrace area (approx.): 66.7 sq. m (718.0 sq. ft)

Tooting
020 8772 9210

Energy Rating: We aim to make our particulars both accurate and reliable. However, they are not guaranteed; nor do they form part of an offer or contract. If you require clarification on any points then please contact us, especially if you're traveling some distance to view. Please note that appliances and heating systems have not been tested and therefore no warranties can be given as to their good working order

**MARSH &
PARSONS**