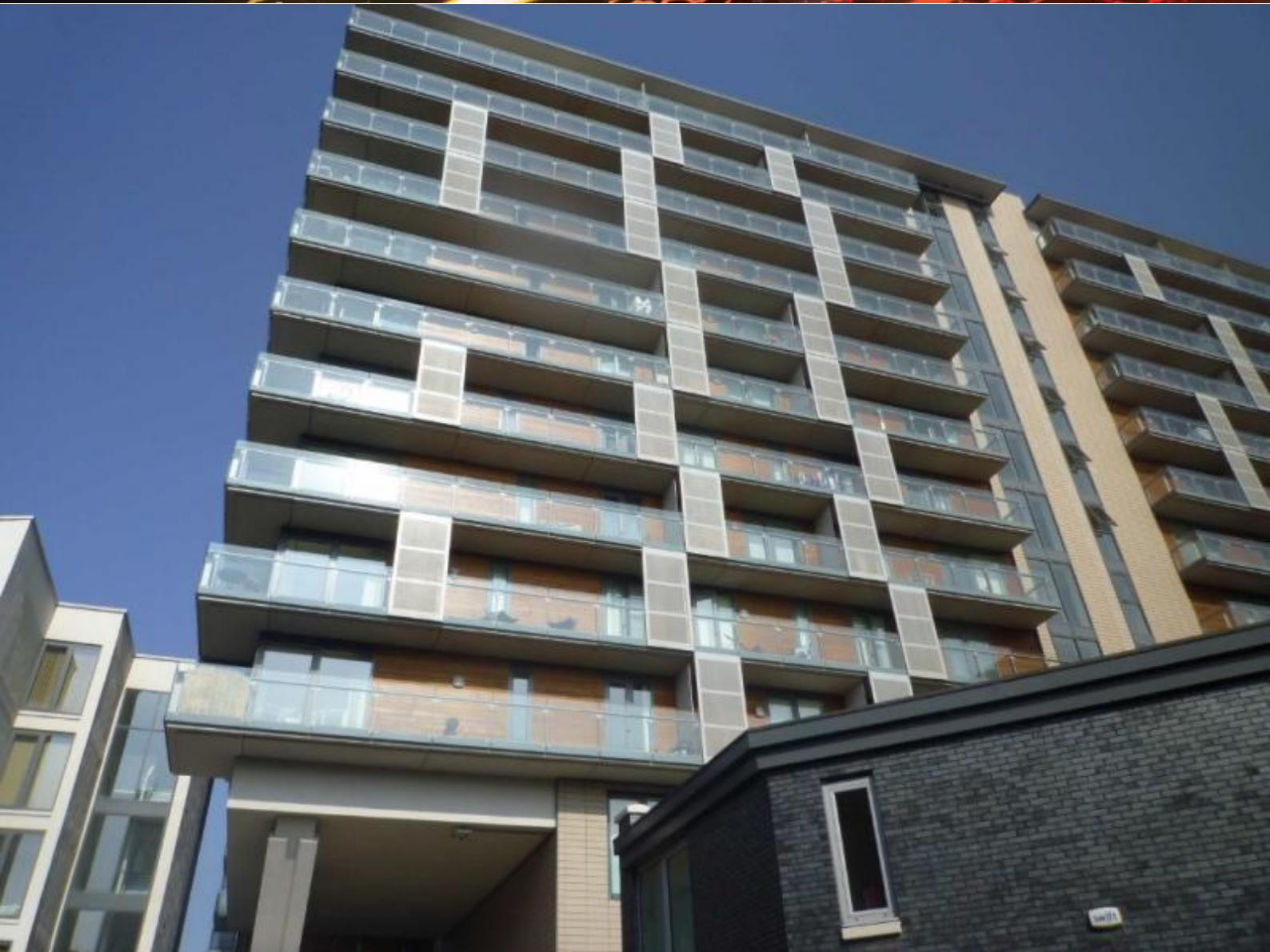


Reeds Rains CITY LIVING

reedsrains.co.uk  



Spectrum Blackfriars Road,
Salford


Offers In Excess Of £185,000

Manchester City Centre
29, Whitworth Street West, Manchester, M1 5ND
0161 236 9088 manchester@reedsrains.co.uk



 rightmove.co.uk

 Zoopla.co.uk

Part of the  LSL Property Services plc Group

Spectrum Blackfriars Road, Salford

Offers In Excess Of £185,000

EPC Grade = C

Reeds Rains

The Estate Agent | Sales & Lettings

LOCAL EXPERTISE, NATIONAL COVERAGE

We have a large network of branches across the UK to support the sale and exposure of your property.

Reeds Rains

The Estate Agent | Sales & Lettings

HASSLE FREE LETTINGS MANAGEMENT

We manage over 10,000 landlords nationwide with thousands of tenants registered and searching for a property to rent today.

Reeds Rains

The Estate Agent | Sales & Lettings

LOOKING FOR A MORTGAGE?

Ask to make an appointment with one of our Mortgage Advisers today.

Reeds Rains Ltd is an Appointed Representative of First Complete Ltd which is authorised and regulated by the Financial Conduct Authority for mortgage and non-investment insurance advice only.

Your home may be repossessed if you do not keep up repayments on your mortgage.

An Administration Fee of £499 will be payable when you sign the Professional Fee Agreement upon mortgage application. This fee may be reduced or waived by Reeds Rains and will be waived if you are a member of the Reeds Rains Remortgage Club.

Reeds Rains

The Estate Agent | Sales & Lettings

HOW MUCH IS YOUR EMPTY PROPERTY COSTING YOU?

Don't let your property stand empty - We can find you a tenant and make it work for you.

NOTES :

MOVING HOUSE?

We have a national network of branches, each with specialised local knowledge and experience, so you will get the best of both when selling or letting with us.

- Over 190 networked branches nationwide
- Sold more than £2.5 billion worth of property in 2011
- Over 10,000 landlords chose us to let their property in 2011
- Comprehensive marketing for your property

CALL TODAY TO ARRANGE A FREE SALES OR RENTAL APPRAISAL.

The Energy Performance Certificate (EPC) for this property will appear here as soon as it becomes available.

The EPC contains information regarding the energy efficiency of the property.

IMPORTANT : This is a sample of an EPC report only, it does not relate to the property For Sale or To Let detailed in this brochure.



Agent's Notes Please note that we have not tested any apparatus, equipment, fixtures, fittings or services, and so cannot verify they are in working order or fit for their purpose. Furthermore solicitors should confirm moveable items described in the sales particulars are, in fact, included in the sale since circumstances do change during marketing or negotiations. A final inspection prior to exchange of contracts is also recommended. Although we try to ensure accuracy, measurements used in this brochure may be approximate. Therefore if intending purchasers need accurate measurements to order carpeting or to ensure existing furniture will fit, they should take such measurements themselves.