



Heathside, Weybridge, KT13 9YL





A fantastic opportunity to acquire a ground-floor apartment in the highly sought-after Heathside development, just a short walk from Weybridge mainline station, Queens Road shops, Weybridge cricket green, and the High Street.

Designed to maximize space and natural light, this well-proportioned home features a generous dual-aspect reception room with views over the beautifully maintained communal gardens. The kitchen also enjoys pleasant garden views, while both spacious double bedrooms include built-in wardrobes. The shower room is fitted with a classic white suite, large walk-in shower, wash basin, and part tiled walls.

Ideal for downsizers, first-time buyers, and buy to let investors, this apartment is offered with no onward chain and includes a garage in a nearby block. With its prime location and excellent amenities close by, this is a fantastic opportunity to secure a home in one of Weybridge's most desirable settings.

Leasehold - Share of Freehold



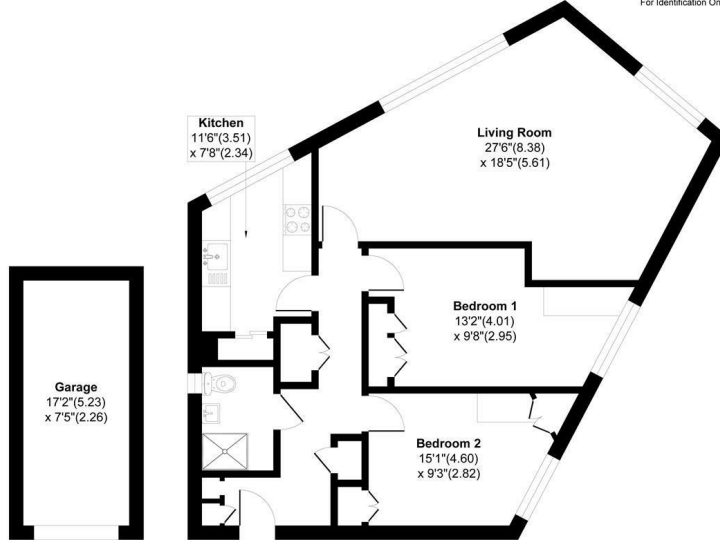
## Heathside, Weybridge KT13

Approximate Area = 863 sq ft / 80.1 sq m

Garage Area = 127 sq ft / 11.8 sq m

Total Area = 990 sq ft / 91.9 sq m

For Identification Only - Not to scale



**Garage**

**Ground Floor**

Floor plan Produced in accordance with RICS Property Measurement 2nd Edition, Incorporating International Property Measurement Standards (IPMS2 Residential). Produced for Grants Homes Agents.



EPC Rating: 69 C





Grants Homes 60 Church Street, Weybridge, Surrey, KT13 8DL  
T: 01932 841020 E: [weybridge@grantshomes.co.uk](mailto:weybridge@grantshomes.co.uk)