



Branch Hill

Hampstead, NW3

£3,100 per month
(£715.38 per week)

VIDEO TOUR AVAILABLE. A spacious 2 bedroom apartment on the 1st floor of this period building with beautiful common parts and boasting wood floors throughout. The property is situated moments' away from the shopping amenities of Hampstead Village, walking distance to the open spaces of Hampstead Heath. Accommodation comprises spacious reception room, kitchen, master bedroom with fitted wardrobes and en-suite shower room, further double bedroom with fitted wardrobes, family bathroom.

CHESTERTONS



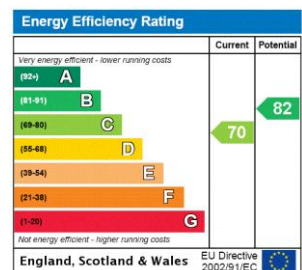
Branch Hill

Hampstead, NW3

- A Spacious 1st Floor Apartment in Period Building
- 2 Bedrooms, 2 Bathrooms, Reception, Kitchen
- Beautiful Common Parts, Wood Floors Throughout
- Situated Moments' Away from Amenities of Hampstead Village, Walking Distance to Open Spaces of Hampstead Heath



Deposit Required: £3,576.92
Local Authority: London Borough Of Camden
Council Tax Band: G
EPC Rating: C
Furnished

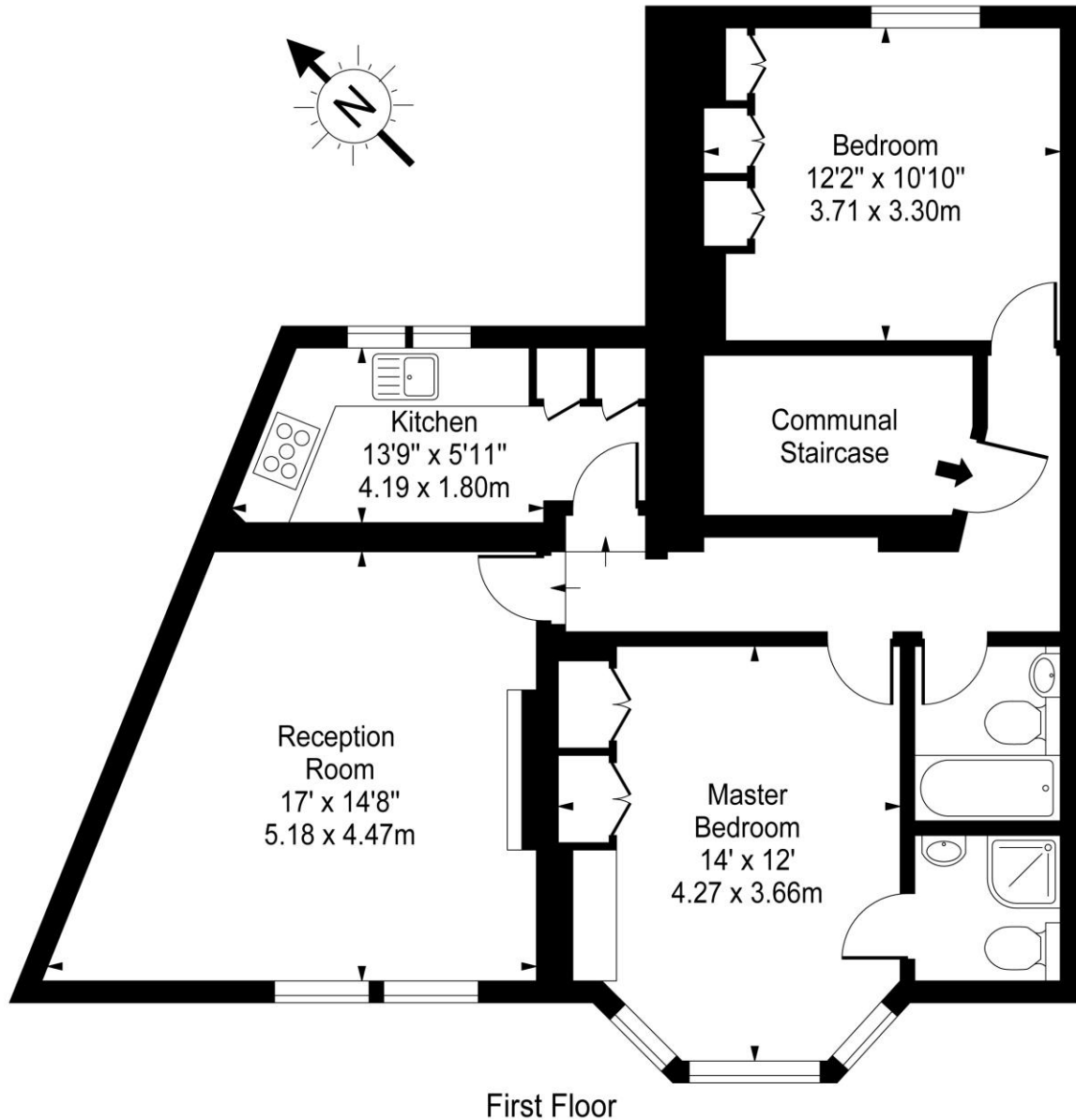


Chestertons Hampstead Lettings

55-56 Hampstead High Street
 Hampstead
 London
 NW3 1QH
hampsteadlettingsusers@chestertons.co.uk
 02077941125
chestertons.co.uk

Additional tenant charges apply (fees apply to non-AST tenancies only)
 Tenancy Agreement Fee: £300
 References per Tenant/Guarantor: £60
 Inventory check (approx. £100 – £250 inc. VAT)
chestertons.co.uk/property-to-rent/applicable-fees

Branch Hill, NW3



First Floor

Approx Gross Internal Area **740 Sq Ft - 68.75 Sq M**
(Excluding Communal Staircase)

For Illustration Purposes Only - Not To Scale

www.goldlens.co.uk

Prepared for Chestertons

Ref. No. 005627J

