



**Guide Price**  
**£300,000**

**Freehold**

3x  1x  2x 

**Clarendon Close,  
Brading, Isle of Wight,  
PO36**

**OVER 60?**

Secure this property  
for up to **59% less!**

  
Helping you move forwards





## Main features

- Beautifully presented detached bungalow
- Brand new kitchen with range cooker and soft close hinges
- Double aspect windows in all rooms flooding them with light
- Low maintenance gardens with garage and driveway
- Situated a moments walk from bus routes and countryside walks

## Accommodation

### GROUND FLOOR

#### Hallway

Lounge: 16'1 x 12'5 (4.91m x 3.79m)

Kitchen: 11'7 x 9'4 (3.53m x 2.85m)

Bedroom 1: 12'8 x 10'8 (3.86m x 3.25m)

Bedroom 2: 12'10 x 9'11 (3.91m x 3.02m)

Bedroom 3: 10'8 x 7'0 (3.25m x 2.14m)

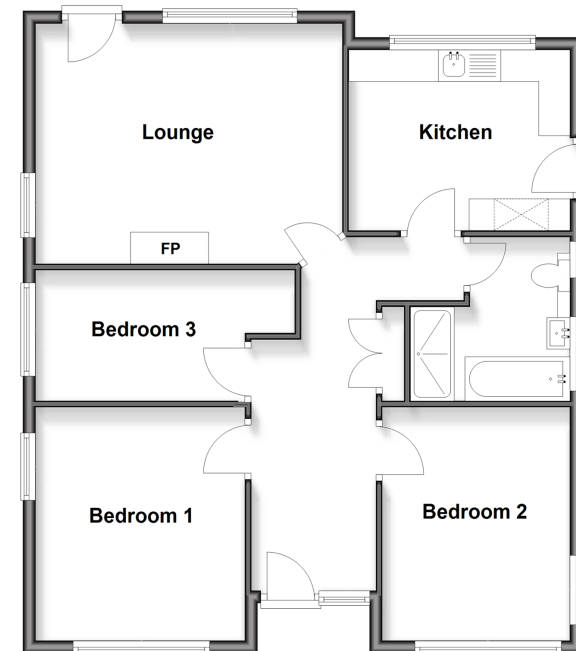
Bathroom

### OUTSIDE

Front & Rear Gardens

Garage & Driveway

**Ground Floor**  
Approx. 80.5 sq. metres (866.7 sq. feet)



**Call Sandown - 01983 407444 ■ [pittis.co.uk](http://pittis.co.uk)**

- Legal advice should be taken to verify fixtures/fittings, planning, alterations and/or lease details
- Through a Homewise Home For Life Plan people aged 60+ can secure this property for up to 50% less, by purchasing a Lifetime Lease.

- Appliances & services are untested, dimensions are approximate and floor plans are not to scale